



INDEPENDENT TESTING LABORATORIES, INC.
3386 LONGHORN ROAD, BOULDER, CO 80302 USA

PHONE: (303)442-1255 • FAX: (303)449-5274 • E-MAIL: itl@itlboulder.com • WEBSITE: www.itlboulder.com

REPORT NUMBER: ITL59496

DATE: 11/15/07

PREPARED FOR: B-K LIGHTING

CATALOG NUMBER: SSL-MR-6-C-AJ

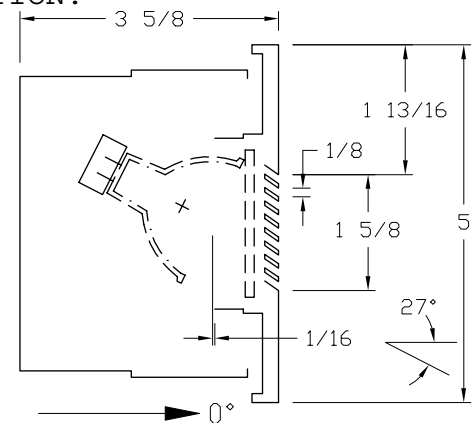
LUMINAIRE: CAST METAL HOUSING, FABRICATED DIFFUSE METAL ADJUSTABLE SOCKET MOUNTING BRACKET, MACHINED BLACK PAINTED METAL SOCKET BRACKET MOUNTING RING, CLEAR FLAT LINEAR PRISMATIC GLASS LENS IN CAST WHITE PAINTED LOUVERED METAL FACEPLATE, LENS PRISMS OUT AND VERTICAL.

LAMP: ONE 50-WATT MR-16 HALOGEN INCANDESCENT, EYE 12V50WEXT JR1501, TILTED 27-DEGREES BELOW HORIZONTAL POSITION.

MOUNTING: RECESSED

NOTE: THIS IS A RELATIVE PHOTOMETRIC REPORT BASED ON THE ACTUAL ABSOLUTE FLUX OUTPUT OF THE LAMP AT RATED INPUT VOLTAGE (12VAC) TO THE LAMP.

REPORT IS BASED ON 827 LUMENS PER LAMP.

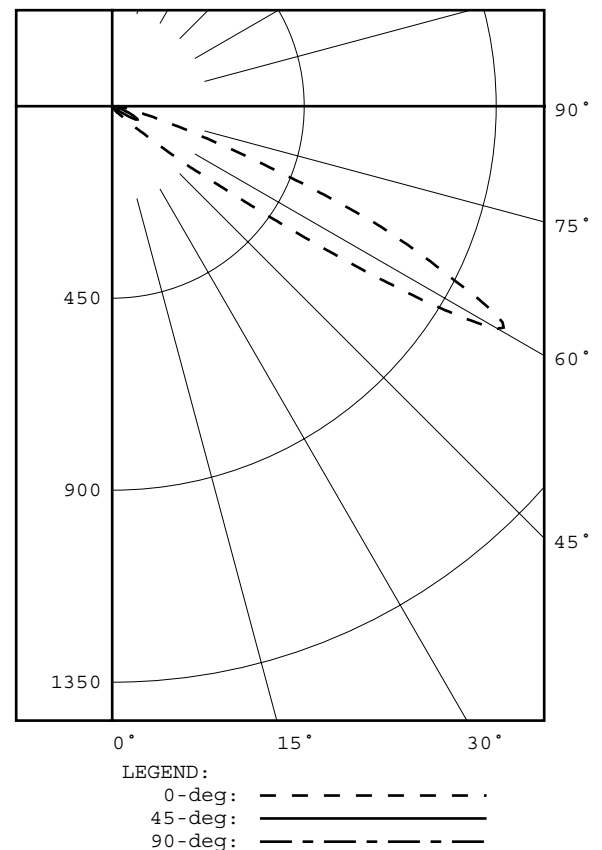


CANDELA DISTRIBUTION						FLUX
	0.0	45.0	90.0	135.0	180.0	
0	0	0	0	0	0	0
5	0	0	0	0	0	0
15	2	1	0	0	0	0
25	6	3	0	0	0	0
35	12	6	0	0	0	1
45	41	8	0	0	0	6
55	461	20	0	0	0	59
65	754	57	0	0	0	104
75	102	20	0	0	0	25
85	24	9	0	0	0	6
90	12	8	0	0	0	0
95	11	7	0	0	0	3
105	9	6	0	0	0	2
115	7	5	0	0	0	2
125	6	4	0	0	0	1
135	4	3	0	0	0	1
145	3	2	0	0	0	0
155	2	1	0	0	0	0
165	0	1	0	0	0	0
175	0	0	0	0	0	0
180	0	0	0	0	0	0

ZONAL LUMEN SUMMARY		%LAMP	%FIXT
ZONE	LUMENS		
0- 30	1	0.1	0.4
0- 40	3	0.3	1.3
0- 60	69	8.3	31.7
0- 90	205	24.8	94.6
90-120	8	1.0	3.8
90-130	10	1.2	4.6
90-150	11	1.4	5.3
90-180	12	1.4	5.4
0-180	217	26.2	100.0

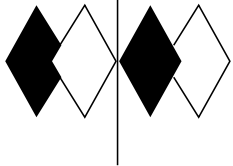
TOTAL LUMINAIRE EFFICIENCY = 26.2 %

CIE TYPE - DIRECT



Checked N. WHITE

Approved R. BEATTIE



itl boulder
THE LIGHT CENTER OF THE INDUSTRY SINCE 1955

INDEPENDENT TESTING LABORATORIES, INC.
3386 LONGHORN ROAD, BOULDER, CO 80302 USA

PHONE: (303)442-1255 • FAX: (303)449-5274 • E-MAIL: itl@itlboulder.com • WEBSITE: www.itlboulder.com

REPORT NUMBER: ITL59496
PREPARED FOR: B-K LIGHTING

DATE: 11/15/07

CANDELA DISTRIBUTION
LATERAL ANGLE

	0.0	5.0	15.0	25.0	35.0	45.0	55.0	65.0	75.0	85.0	90.0	112.5	135.0	157.5
0.0	0	0	0	0	0	0	0	0	0	0	0	0	0	0
2.5	0	0	0	0	0	0	0	0	0	0	0	0	0	0
5.0	0	0	0	0	0	0	0	0	0	0	0	0	0	0
7.5	1	1	1	0	0	0	0	0	0	0	0	0	0	0
10.0	1	1	1	1	1	1	0	0	0	0	0	0	0	0
12.5	2	2	2	1	1	1	1	0	0	0	0	0	0	0
15.0	2	2	2	2	2	1	1	0	0	0	0	0	0	0
17.5	3	3	3	3	2	2	1	1	0	0	0	0	0	0
20.0	4	3	3	3	3	2	2	1	0	0	0	0	0	0
22.5	5	5	4	4	3	3	2	1	0	0	0	0	0	0
25.0	6	6	6	5	4	3	2	1	0	0	0	0	0	0
27.5	7	7	7	6	5	4	3	2	1	0	0	0	0	0
30.0	9	9	8	7	6	4	3	2	1	0	0	0	0	0
32.5	10	10	10	8	6	5	3	2	1	0	0	0	0	0
35.0	12	12	11	9	7	6	4	2	1	0	0	0	0	0
37.5	16	16	14	10	8	6	4	3	1	0	0	0	0	0
40.0	19	19	18	13	9	7	5	3	1	0	0	0	0	0
42.5	28	27	21	15	11	7	5	3	2	0	0	0	0	0
45.0	41	40	31	21	13	8	5	3	2	0	0	0	0	0
47.5	74	69	47	32	16	9	6	4	2	0	0	0	0	0
50.0	127	116	71	52	24	10	6	4	2	0	0	0	0	0
50.5	152	138	83	60	27	10	6	4	2	0	0	0	0	0
51.0	181	165	98	71	31	11	6	4	2	0	0	0	0	0
51.5	206	189	113	84	37	11	6	4	2	0	0	0	0	0
52.0	231	211	127	97	44	12	6	4	2	0	0	0	0	0
52.5	255	231	141	109	51	13	7	4	2	0	0	0	0	0
53.0	283	256	157	123	57	13	7	4	2	0	0	0	0	0
53.5	315	283	175	138	64	15	7	4	2	0	0	0	0	0
54.0	357	318	194	157	75	17	7	4	2	0	0	0	0	0
54.5	406	361	216	178	87	18	7	4	2	0	0	0	0	0
55.0	461	405	245	206	101	20	7	4	2	0	0	0	0	0
55.5	520	459	276	238	118	24	7	4	2	0	0	0	0	0
56.0	586	521	310	273	137	28	8	4	2	0	0	0	0	0
56.5	653	578	345	310	156	31	8	4	2	0	0	0	0	0
57.0	722	635	376	352	181	35	8	4	2	0	0	0	0	0
57.5	788	692	411	393	203	40	8	5	2	0	0	0	0	0
58.0	857	750	444	433	225	45	8	5	3	0	0	0	0	0
58.5	915	796	476	470	246	49	8	5	3	0	0	0	0	0
59.0	968	837	506	506	265	53	9	5	3	0	0	0	0	0
59.5	1010	874	533	540	282	57	9	5	3	0	0	0	0	0
60.0	1042	906	558	571	297	61	9	5	3	0	0	0	0	0
60.5	1054	921	574	588	306	63	9	5	3	0	0	0	0	0
61.0	1046	919	585	602	312	65	9	5	3	0	0	0	0	0
61.5	1024	905	589	612	315	66	9	5	3	0	0	0	0	0
62.0	989	879	584	612	314	67	9	5	3	0	0	0	0	0
62.5	950	849	570	600	311	67	9	5	3	0	0	0	0	0
63.0	903	812	553	577	301	66	9	6	3	0	0	0	0	0
63.5	866	783	538	553	290	64	9	6	3	0	0	0	0	0
64.0	830	748	520	531	279	62	9	6	3	0	0	0	0	0
64.5	793	711	499	511	268	59	9	6	3	0	0	0	0	0
65.0	754	675	478	492	256	57	9	6	3	0	0	0	0	0
65.5	716	641	455	476	245	56	9	6	3	0	0	0	0	0
66.0	677	602	432	459	230	54	9	6	3	0	0	0	0	0
66.5	625	559	405	436	215	51	9	6	3	0	0	0	0	0
67.0	573	509	375	404	200	48	9	6	3	0	0	0	0	0
67.5	520	460	343	372	186	46	10	6	3	0	0	0	0	0
68.0	472	417	318	345	171	43	10	6	3	0	0	0	0	0
68.5	422	374	293	319	158	40	10	5	3	0	0	0	0	0
69.0	379	336	266	292	147	38	10	5	3	0	0	0	0	0
69.5	340	302	241	263	136	35	10	5	3	0	0	0	0	0
70.0	304	272	218	237	127	33	10	5	3	0	0	0	0	0
72.5	176	163	135	142	87	26	9	5	3	0	0	0	0	0
75.0	102	96	86	82	58	20	9	5	3	0	0	0	0	0
77.5	61	58	51	51	38	16	9	5	3	0	0	0	0	0
80.0	49	48	42	36	28	15	9	5	3	0	0	0	0	0



INDEPENDENT TESTING LABORATORIES, INC.
3386 LONGHORN ROAD, BOULDER, CO 80302 USA

PHONE: (303)442-1255 • FAX: (303)449-5274 • E-MAIL: itl@itlboulder.com • WEBSITE: www.itlboulder.com

REPORT NUMBER: ITL59496
PREPARED FOR: B-K LIGHTING

DATE: 11/15/07

CANDELA DISTRIBUTION
LATERAL ANGLE

	0.0	5.0	15.0	25.0	35.0	45.0	55.0	65.0	75.0	85.0	90.0	112.5	135.0	157.5
82.5	33	34	29	27	19	11	8	5	3	0	0	0	0	0
85.0	24	24	21	19	15	9	7	5	3	0	0	0	0	0
87.5	17	17	16	15	12	9	7	5	3	0	0	0	0	0
90.0	12	12	12	11	9	8	6	5	3	0	0	0	0	0
92.5	11	11	11	10	9	7	6	5	3	0	0	0	0	0
95.0	11	11	10	9	8	7	6	4	3	0	0	0	0	0
97.5	10	10	10	9	8	7	5	4	2	0	0	0	0	0
100.0	10	9	9	8	7	6	5	4	2	0	0	0	0	0
102.5	9	9	9	8	7	6	5	3	2	0	0	0	0	0
105.0	9	8	8	8	7	6	5	3	2	0	0	0	0	0
107.5	8	8	8	7	6	6	4	3	2	0	0	0	0	0
110.0	8	8	7	7	6	5	4	3	1	0	0	0	0	0
112.5	7	7	7	7	6	5	4	3	1	0	0	0	0	0
115.0	7	7	7	6	6	5	4	2	1	0	0	0	0	0
117.5	7	7	6	6	5	5	3	2	1	0	0	0	0	0
120.0	6	6	6	6	5	4	3	2	1	0	0	0	0	0
122.5	6	6	6	5	5	4	3	2	1	0	0	0	0	0
125.0	6	6	6	5	5	4	3	2	1	0	0	0	0	0
127.5	5	5	5	5	4	4	3	2	1	0	0	0	0	0
130.0	5	5	5	5	4	3	3	2	1	0	0	0	0	0
132.5	5	5	5	4	4	3	2	2	1	0	0	0	0	0
135.0	4	4	4	4	3	3	2	1	1	0	0	0	0	0
137.5	4	4	4	4	3	3	2	1	1	0	0	0	0	0
140.0	4	4	4	3	3	2	2	1	1	0	0	0	0	0
142.5	3	3	3	3	3	2	2	1	1	0	0	0	0	0
145.0	3	3	3	3	3	2	2	1	0	0	0	0	0	0
147.5	3	3	3	3	2	2	1	1	0	0	0	0	0	0
150.0	3	2	2	2	2	2	1	1	0	0	0	0	0	0
152.5	2	2	2	2	2	2	1	1	0	0	0	0	0	0
155.0	2	2	2	2	2	1	1	1	0	0	0	0	0	0
157.5	2	2	2	2	1	1	1	0	0	0	0	0	0	0
160.0	1	1	1	1	1	1	1	0	0	0	0	0	0	0
162.5	0	1	1	1	1	1	1	0	0	0	0	0	0	0
165.0	0	0	1	1	1	1	0	0	0	0	0	0	0	0
167.5	0	0	0	1	0	0	0	0	0	0	0	0	0	0
170.0	0	0	0	0	0	0	0	0	0	0	0	0	0	0
172.5	0	0	0	0	0	0	0	0	0	0	0	0	0	0
175.0	0	0	0	0	0	0	0	0	0	0	0	0	0	0
177.5	0	0	0	0	0	0	0	0	0	0	0	0	0	0
180.0	0	0	0	0	0	0	0	0	0	0	0	0	0	0



INDEPENDENT TESTING LABORATORIES, INC.
3386 LONGHORN ROAD, BOULDER, CO 80302 USA

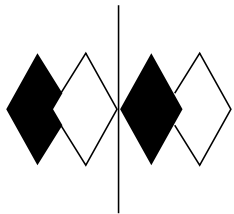
PHONE: (303)442-1255 • FAX: (303)449-5274 • E-MAIL: itl@itlboulder.com • WEBSITE: www.itlboulder.com

REPORT NUMBER: ITL59496
PREPARED FOR: B-K LIGHTING

DATE: 11/15/07

CANDELA DISTRIBUTION
LATERAL ANGLE

	180.0
0.0	0
2.5	0
5.0	0
7.5	0
10.0	0
12.5	0
15.0	0
17.5	0
20.0	0
22.5	0
25.0	0
27.5	0
30.0	0
32.5	0
35.0	0
37.5	0
40.0	0
42.5	0
45.0	0
47.5	0
50.0	0
50.5	0
51.0	0
51.5	0
52.0	0
52.5	0
53.0	0
53.5	0
54.0	0
54.5	0
55.0	0
55.5	0
56.0	0
56.5	0
57.0	0
57.5	0
58.0	0
58.5	0
59.0	0
59.5	0
60.0	0
60.5	0
61.0	0
61.5	0
62.0	0
62.5	0
63.0	0
63.5	0
64.0	0
64.5	0
65.0	0
65.5	0
66.0	0
66.5	0
67.0	0
67.5	0
68.0	0
68.5	0
69.0	0
69.5	0
70.0	0
72.5	0
75.0	0
77.5	0
80.0	0



itl boulder
THE LIGHT CENTER OF THE INDUSTRY SINCE 1955

INDEPENDENT TESTING LABORATORIES, INC.
3386 LONGHORN ROAD, BOULDER, CO 80302 USA

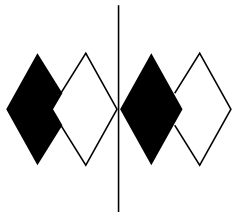
PHONE: (303)442-1255 • FAX: (303)449-5274 • E-MAIL: itl@itlboulder.com • WEBSITE: www.itlboulder.com

REPORT NUMBER: ITL59496
PREPARED FOR: B-K LIGHTING

DATE: 11/15/07

CANDELA DISTRIBUTION
LATERAL ANGLE

	180.0
82.5	0
85.0	0
87.5	0
90.0	0
92.5	0
95.0	0
97.5	0
100.0	0
102.5	0
105.0	0
107.5	0
110.0	0
112.5	0
115.0	0
117.5	0
120.0	0
122.5	0
125.0	0
127.5	0
130.0	0
132.5	0
135.0	0
137.5	0
140.0	0
142.5	0
145.0	0
147.5	0
150.0	0
152.5	0
155.0	0
157.5	0
160.0	0
162.5	0
165.0	0
167.5	0
170.0	0
172.5	0
175.0	0
177.5	0
180.0	0



itl boulder
THE LIGHT CENTER OF THE INDUSTRY SINCE 1955

INDEPENDENT TESTING LABORATORIES, INC.
3386 LONGHORN ROAD, BOULDER, CO 80302 USA

PHONE: (303)442-1255 • FAX: (303)449-5274 • E-MAIL: itl@itlboulder.com • WEBSITE: www.itlboulder.com

REPORT NUMBER: ITL59496

DATE: 11/15/07

PREPARED FOR: B-K LIGHTING

COEFFICIENTS OF UTILIZATION - ZONAL CAVITY METHOD

EFFECTIVE FLOOR CAVITY REFLECTANCE 0.20

RC	80				70				50			30			10			0
RW	70	50	30	10	70	50	30	10	50	30	10	50	30	10	50	30	10	0
0	31	31	31	31	30	30	30	30	29	29	29	27	27	27	26	26	26	25
1	27	25	23	22	26	24	23	21	23	22	20	22	21	20	20	19	19	18
2	23	20	17	15	22	19	17	15	18	16	14	17	15	14	16	14	13	12
3	20	16	13	10	19	15	12	10	14	12	10	13	11	9	12	10	9	8
4	17	13	10	7	16	12	9	7	11	9	7	11	8	6	10	8	6	5
5	15	11	7	5	15	10	7	5	9	7	5	9	6	5	8	6	4	3
6	14	9	6	4	13	9	6	4	8	5	3	7	5	3	7	5	3	2
7	12	8	5	3	12	8	5	3	7	4	3	6	4	2	6	4	2	2
8	11	7	4	2	11	7	4	2	6	4	2	6	3	2	5	3	2	1
9	11	6	4	2	10	6	3	2	5	3	2	5	3	1	5	3	1	1
10	10	6	3	1	9	5	3	1	5	3	1	5	3	1	4	2	1	1

ALL CANDELA, LUMENS, LUMINANCE, COEFFICIENT OF UTILIZATION AND VCP VALUES IN THIS REPORT ARE BASED ON RELATIVE PHOTOMETRY WHICH ASSUMES A BALLAST FACTOR OF 1.000. ANY CALCULATIONS PREPARED FROM THESE DATA SHOULD INCLUDE AN APPROPRIATE BALLAST FACTOR.

NOTE: THE ZONAL CAVITY CALCULATION TECHNIQUE IS ACCURATE WHEN LUMINAIRES WITH SYMMETRIC CANDELA DISTRIBUTIONS ARE EMPLOYED AND WHEN THE LUMINAIRES ARE LOCATED SYMMETRICALLY THROUGHOUT THE ROOM. THIS UNIT HAS SPECIAL CHARACTERISTICS AND THEREFORE THESE COEFFICIENTS SHOULD BE USED WITH CAUTION.