

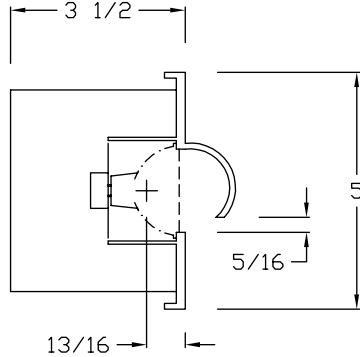
itl boulder
THE LIGHT CENTER OF THE INDUSTRY SINCE 1955

INDEPENDENT TESTING LABORATORIES, INC.
3386 LONGHORN ROAD, BOULDER, CO 80302 USA

PHONE: (303)442-1255 • FAX: (303)449-5274 • E-MAIL: itl@itlboulder.com • WEBSITE: www.itlboulder.com

ISOFOOTCANDLE LINES OF HORIZONTAL ILLUMINATION

Values based on 1 foot mounting height.



REPORT NUMBER: ITL47654

DATE: 03/20/98

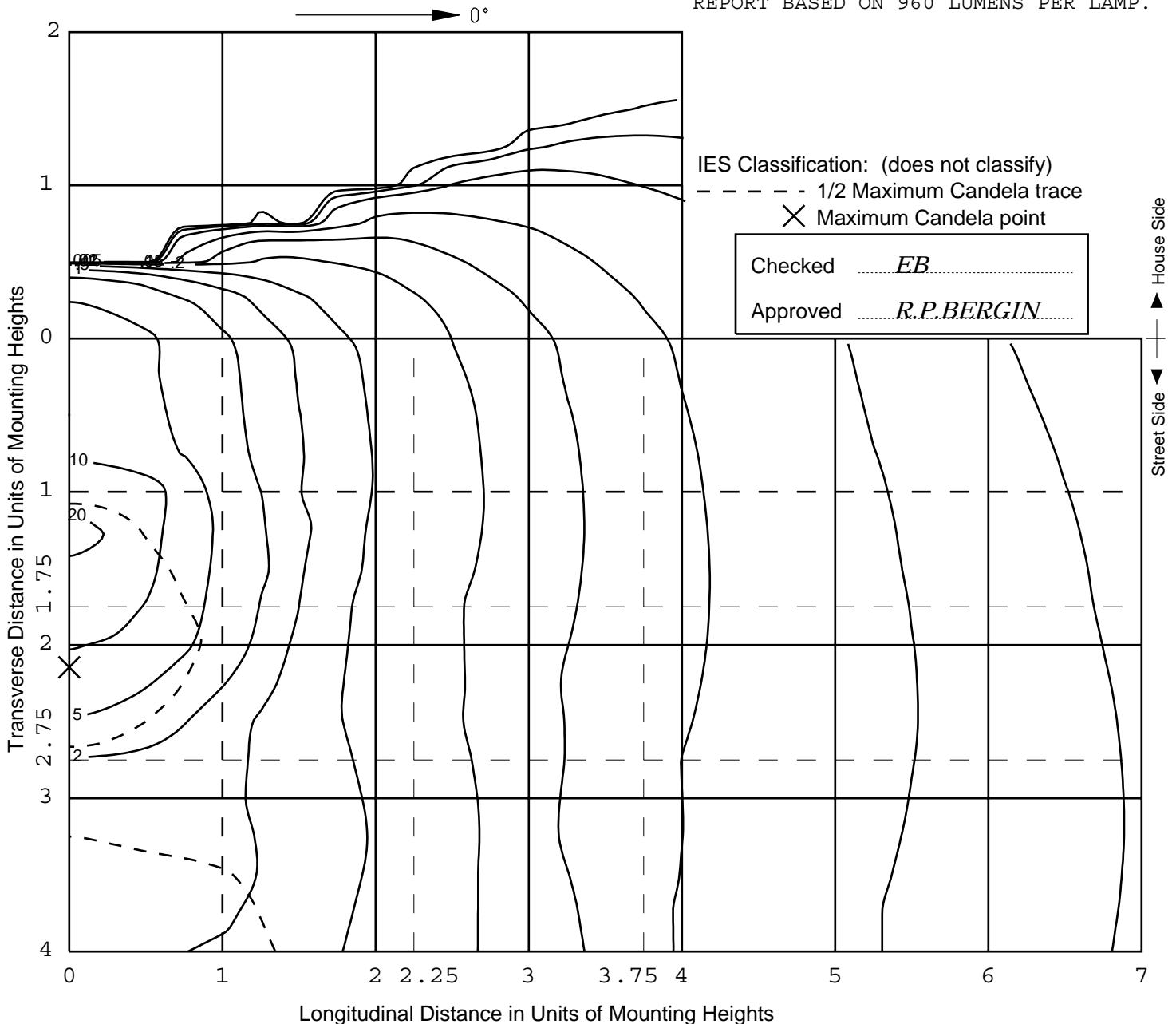
PREPARED FOR: B-K LIGHTING, INC.

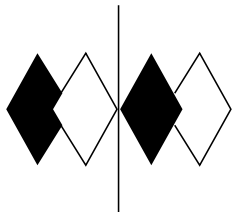
CATALOG NUMBER: SS-6-XXX-A

LUMINAIRE: ONE PIECE WHITE PAINTED FORMED METAL LAMP HOUSING/CIRCULAR PLATE WITH INTEGRAL TRUNCATED HEMISPHERICAL COVER MOUNTED INSIDE DOUBLE JUNCTION BOX. CLEAR FLAT LINEAR PRISMATIC CIRCULAR GLASS LENS, PRISMS ALIGNED VERTICALLY.

LAMP: ONE 50-WATT MR-16 HALOGEN INCANDESCENT, EYE 12V50WEXT JR1501, HORIZONTAL POSITION.

REPORT BASED ON 960 LUMENS PER LAMP.





itl boulder

THE LIGHT CENTER OF THE INDUSTRY SINCE 1955

INDEPENDENT TESTING LABORATORIES, INC.

3386 LONGHORN ROAD, BOULDER, CO 80302 USA

PHONE: (303)442-1255 • FAX: (303)449-5274 • E-MAIL: itl@itlboulder.com • WEBSITE: www.itlboulder.com

MAXIMUM PLANE AND MAXIMUM CONE PLOTS OF CANDELA

REPORT NUMBER: ITL47654

DATE: 03/20/98

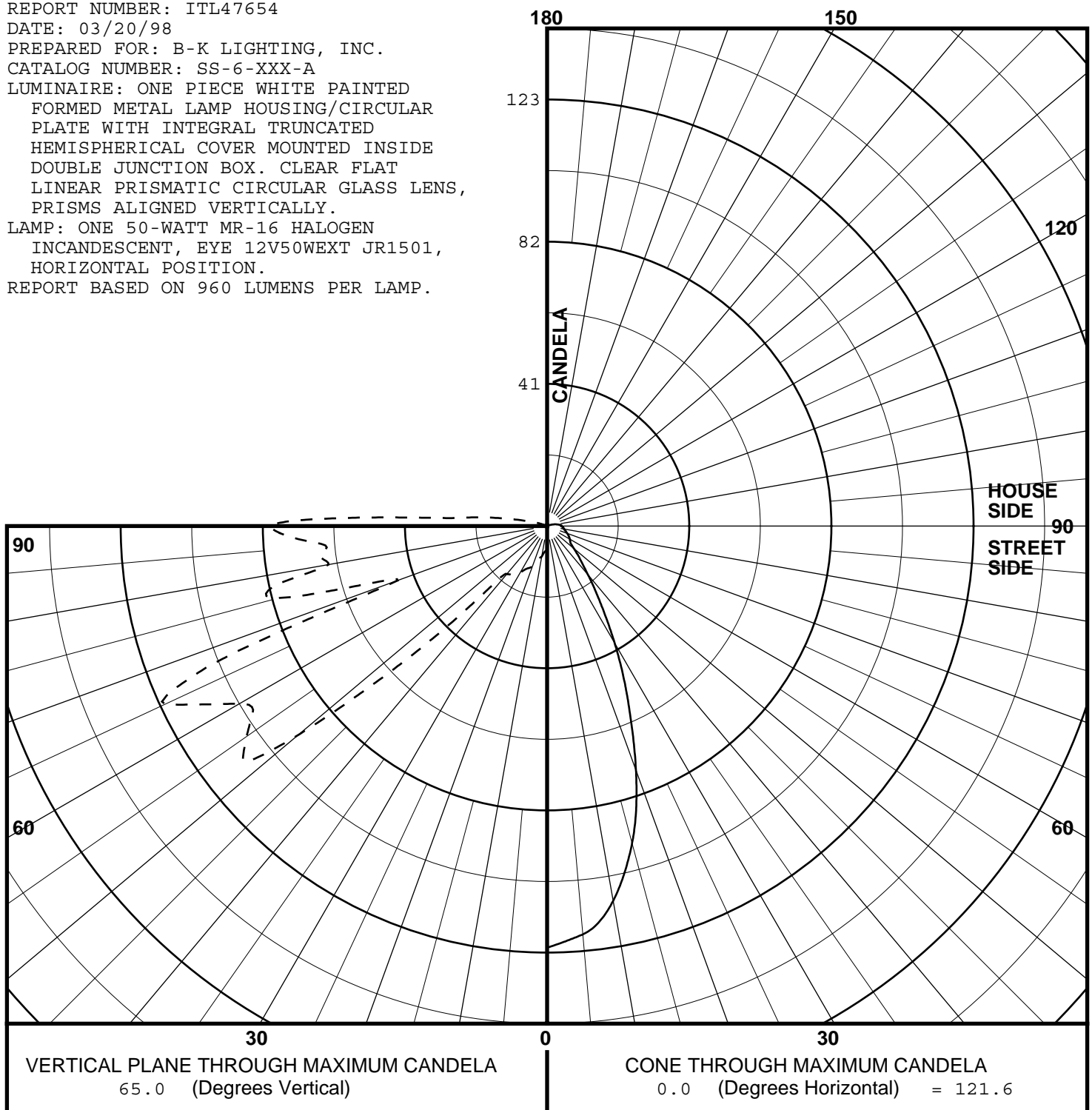
PREPARED FOR: B-K LIGHTING, INC.

CATALOG NUMBER: SS-6-XXX-A

LUMINAIRE: ONE PIECE WHITE PAINTED
FORMED METAL LAMP HOUSING/CIRCULAR
PLATE WITH INTEGRAL TRUNCATED
HEMISPHERICAL COVER MOUNTED INSIDE
DOUBLE JUNCTION BOX. CLEAR FLAT
LINEAR PRISMATIC CIRCULAR GLASS LENS,
PRISMS ALIGNED VERTICALLY.

LAMP: ONE 50-WATT MR-16 HALOGEN
INCANDESCENT, EYE 12V50WEXT JR1501,
HORIZONTAL POSITION.

REPORT BASED ON 960 LUMENS PER LAMP.





itl boulder
THE LIGHT CENTER OF THE INDUSTRY SINCE 1955

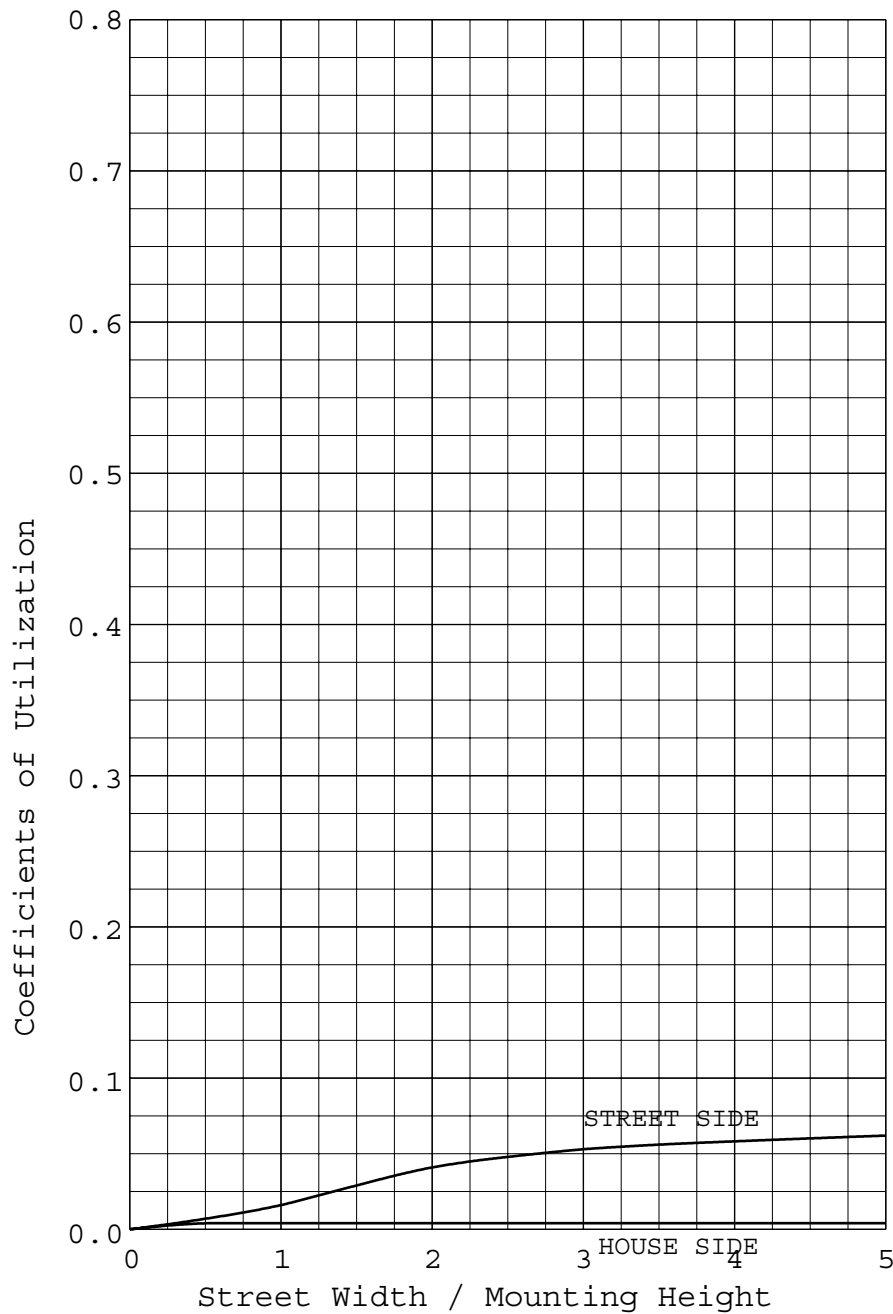
INDEPENDENT TESTING LABORATORIES, INC.
3386 LONGHORN ROAD, BOULDER, CO 80302 USA

PHONE: (303)442-1255 • FAX: (303)449-5274 • E-MAIL: itl@itlboulder.com • WEBSITE: www.itlboulder.com

REPORT NUMBER: ITL47654
PREPARED FOR: B-K LIGHTING, INC.

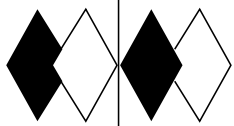
DATE: 03/20/98

COEFFICIENTS OF UTILIZATION AND FLUX DISTRIBUTION



	LUMENS	PERCENT OF LAMP
DOWNWARD STREET SIDE	73	7.60
DOWNWARD HOUSE SIDE	4	0.42
DOWNWARD TOTAL	77	8.02
UPWARD STREET SIDE	9	0.94
UPWARD HOUSE SIDE	0	0.00
UPWARD TOTAL	9	0.94
TOTAL FLUX	86	8.96

ALL CANDELA, LUMENS AND COEFFICIENT OF UTILIZATION VALUES IN THIS REPORT ARE BASED ON RELATIVE PHOTOMETRY WHICH ASSUMES A BALLAST FACTOR OF 1.00. ANY CALCULATIONS PREPARED FROM THESE DATA SHOULD INCLUDE AN APPROPRIATE BALLAST FACTOR.



itl boulder

THE LIGHT CENTER OF THE INDUSTRY SINCE 1955

INDEPENDENT TESTING LABORATORIES, INC.
3386 LONGHORN ROAD, BOULDER, CO 80302 USA

PHONE: (303)442-1255 • FAX: (303)449-5274 • E-MAIL: itl@itlboulder.com • WEBSITE: www.itlboulder.com

REPORT NUMBER: ITL47654
PREPARED FOR: B-K LIGHTING, INC.

DATE: 03/20/98

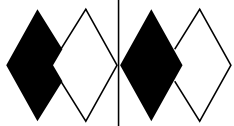
CANDELA TABULATION

	STREET SIDE	LATERAL ANGLE										
		0.0	5.0	15.0	25.0	35.0	45.0	55.0	65.0	75.0	85.0	90.0
	180.0	0.	0.	0.	0.	0.	0.	0.	0.	0.	0.	0.
	175.0	0.	0.	0.	0.	0.	0.	0.	0.	0.	0.	0.
	165.0	0.	0.	0.	0.	0.	0.	0.	0.	0.	0.	0.
	155.0	0.	0.	0.	0.	0.	0.	0.	0.	0.	0.	0.
	145.0	0.	0.	0.	0.	0.	0.	0.	0.	0.	0.	0.
	135.0	0.	0.	0.	0.	0.	0.	0.	0.	0.	0.	0.
	125.0	0.	0.	0.	0.	0.	0.	0.	0.	0.	0.	0.
	115.0	0.	0.	0.	0.	0.	0.	0.	0.	0.	0.	0.
	105.0	5.	5.	5.	4.	4.	3.	2.	2.	1.	0.	0.
	95.0	27.	27.	25.	19.	7.	4.	3.	2.	1.	0.	0.
	90.0	80.	75.	74.	55.	18.	6.	4.	3.	2.	1.	0.
	87.5	74.	69.	72.	46.	20.	6.	5.	4.	3.	1.	1.
	85.0	64.	61.	64.	39.	22.	7.	5.	4.	3.	2.	2.
	82.5	66.	62.	63.	37.	21.	8.	6.	5.	3.	3.	2.
	80.0	64.	65.	65.	36.	21.	9.	6.	5.	4.	3.	3.
	77.5	81.	80.	73.	42.	21.	10.	6.	5.	4.	3.	3.
	75.0	80.	78.	68.	42.	22.	11.	7.	6.	5.	4.	3.
	72.5	57.	54.	45.	31.	18.	10.	7.	6.	5.	4.	4.
	70.0	46.	44.	37.	25.	15.	10.	7.	6.	5.	4.	4.
V	67.5	106.	97.	66.	38.	18.	11.	8.	7.	5.	4.	4.
E	65.0<<	122.	118.	95.	55.	27.	13.	8.	7.	6.	5.	4.
R	62.5	111.	111.	93.	56.	32.	17.	9.	7.	6.	5.	4.
T	60.0	102.	102.	89.	56.	33.	18.	9.	7.	6.	5.	5.
I	57.5	101.	103.	84.	55.	34.	20.	10.	8.	6.	5.	5.
C	55.0	106.	101.	75.	50.	33.	19.	10.	8.	7.	5.	5.
A	52.5	111.	97.	74.	50.	32.	19.	10.	8.	7.	6.	5.
L	50.0	94.	85.	71.	50.	30.	17.	10.	8.	7.	6.	6.
	47.5	66.	63.	61.	47.	28.	16.	10.	8.	7.	6.	6.
A	45.0	42.	38.	35.	28.	18.	13.	10.	8.	7.	7.	6.
N	42.5	21.	20.	19.	17.	13.	12.	10.	8.	7.	7.	7.
G	40.0	18.	17.	17.	15.	13.	12.	10.	8.	8.	7.	7.
L	37.5	18.	17.	17.	14.	13.	12.	10.	8.	8.	7.	7.
E	35.0	17.	17.	16.	14.	12.	11.	10.	9.	8.	7.	7.
	32.5	17.	16.	15.	13.	12.	11.	10.	8.	8.	7.	8.
	30.0	16.	14.	14.	13.	12.	11.	10.	8.	8.	7.	8.
	27.5	14.	13.	13.	13.	12.	11.	9.	8.	8.	8.	8.
	25.0	14.	13.	13.	12.	11.	10.	9.	8.	8.	8.	8.
	20.0	13.	12.	12.	11.	10.	10.	8.	8.	8.	8.	8.
	15.0	11.	10.	10.	9.	9.	9.	8.	7.	7.	7.	8.
	10.0	9.	8.	8.	8.	8.	8.	7.	7.	7.	7.	8.
	5.0	7.	7.	7.	7.	7.	7.	7.	7.	7.	7.	7.
	0.0	7.	7.	7.	7.	7.	7.	7.	7.	7.	7.	7.

||

PLANE OF MAXIMUM CANDELA

CONE OF MAXIMUM CANDELA



itl boulder

THE LIGHT CENTER OF THE INDUSTRY SINCE 1955

INDEPENDENT TESTING LABORATORIES, INC.
3386 LONGHORN ROAD, BOULDER, CO 80302 USA

PHONE: (303)442-1255 • FAX: (303)449-5274 • E-MAIL: itl@itlboulder.com • WEBSITE: www.itlboulder.com

REPORT NUMBER: ITL47654
PREPARED FOR: B-K LIGHTING, INC.

DATE: 03/20/98

CANDELA TABULATION

	HOUSE SIDE					LATERAL ANGLE				
	95.0	105.0	115.0	125.0	135.0	145.0	155.0	165.0	175.0	180.0
180.0	0.	0.	0.	0.	0.	0.	0.	0.	0.	0.
175.0	0.	0.	0.	0.	0.	0.	0.	0.	0.	0.
165.0	0.	0.	0.	0.	0.	0.	0.	0.	0.	0.
155.0	0.	0.	0.	0.	0.	0.	0.	0.	0.	0.
145.0	0.	0.	0.	0.	0.	0.	0.	0.	0.	0.
135.0	0.	0.	0.	0.	0.	0.	0.	0.	0.	0.
125.0	0.	0.	0.	0.	0.	0.	0.	0.	0.	0.
115.0	0.	0.	0.	0.	0.	0.	0.	0.	0.	0.
105.0	0.	0.	0.	0.	0.	0.	0.	0.	0.	0.
95.0	0.	0.	0.	0.	0.	0.	0.	0.	0.	0.
90.0	0.	0.	0.	0.	0.	0.	0.	0.	0.	0.
87.5	0.	0.	0.	0.	0.	0.	0.	0.	0.	0.
85.0	1.	0.	0.	0.	0.	0.	0.	0.	0.	0.
82.5	2.	1.	0.	0.	0.	0.	0.	0.	0.	0.
80.0	2.	1.	0.	0.	0.	0.	0.	0.	0.	0.
77.5	2.	1.	0.	0.	0.	0.	0.	0.	0.	0.
75.0	3.	1.	0.	0.	0.	0.	0.	0.	0.	0.
72.5	3.	2.	0.	0.	0.	0.	0.	0.	0.	0.
70.0	3.	2.	0.	0.	0.	0.	0.	0.	0.	0.
V 67.5	3.	2.	0.	0.	0.	0.	0.	0.	0.	0.
E 65.0<<	4.	2.	0.	0.	0.	0.	0.	0.	0.	0.
R 62.5	4.	2.	0.	0.	0.	0.	0.	0.	0.	0.
T 60.0	4.	2.	0.	0.	0.	0.	0.	0.	0.	0.
I 57.5	4.	2.	0.	0.	0.	0.	0.	0.	0.	0.
C 55.0	5.	3.	0.	0.	0.	0.	0.	0.	0.	0.
A 52.5	5.	3.	0.	0.	0.	0.	0.	0.	0.	0.
L 50.0	5.	3.	0.	0.	0.	0.	0.	0.	0.	0.
47.5	6.	4.	1.	0.	0.	0.	0.	0.	0.	0.
A 45.0	6.	4.	1.	0.	0.	0.	0.	0.	0.	0.
N 42.5	6.	5.	1.	0.	0.	0.	0.	0.	0.	0.
G 40.0	7.	5.	2.	0.	0.	0.	0.	0.	0.	0.
L 37.5	7.	6.	2.	0.	0.	0.	0.	0.	0.	0.
E 35.0	7.	6.	3.	0.	0.	0.	0.	0.	0.	0.
32.5	8.	7.	4.	1.	0.	0.	0.	0.	0.	0.
30.0	8.	7.	5.	1.	0.	0.	0.	0.	0.	0.
27.5	8.	8.	6.	2.	0.	0.	0.	0.	0.	0.
25.0	8.	8.	7.	4.	1.	0.	0.	0.	0.	0.
20.0	8.	8.	8.	7.	5.	2.	0.	0.	0.	0.
15.0	8.	8.	9.	9.	9.	7.	6.	4.	3.	4.
10.0	8.	8.	8.	9.	10.	10.	10.	10.	10.	11.
5.0	7.	7.	7.	7.	8.	8.	8.	9.	9.	9.
0.0	7.	7.	7.	7.	7.	7.	7.	7.	7.	7.

CONE OF MAXIMUM CANDELA