

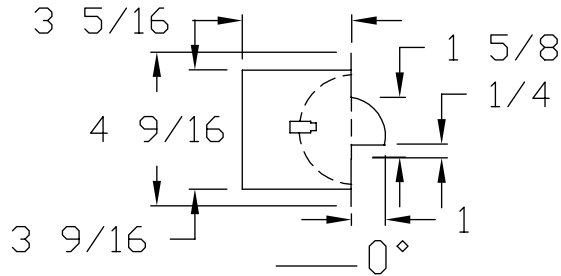
itl boulder
THE LIGHT CENTER OF THE INDUSTRY SINCE 1955

INDEPENDENT TESTING LABORATORIES, INC.
3386 LONGHORN ROAD, BOULDER, CO 80302 USA

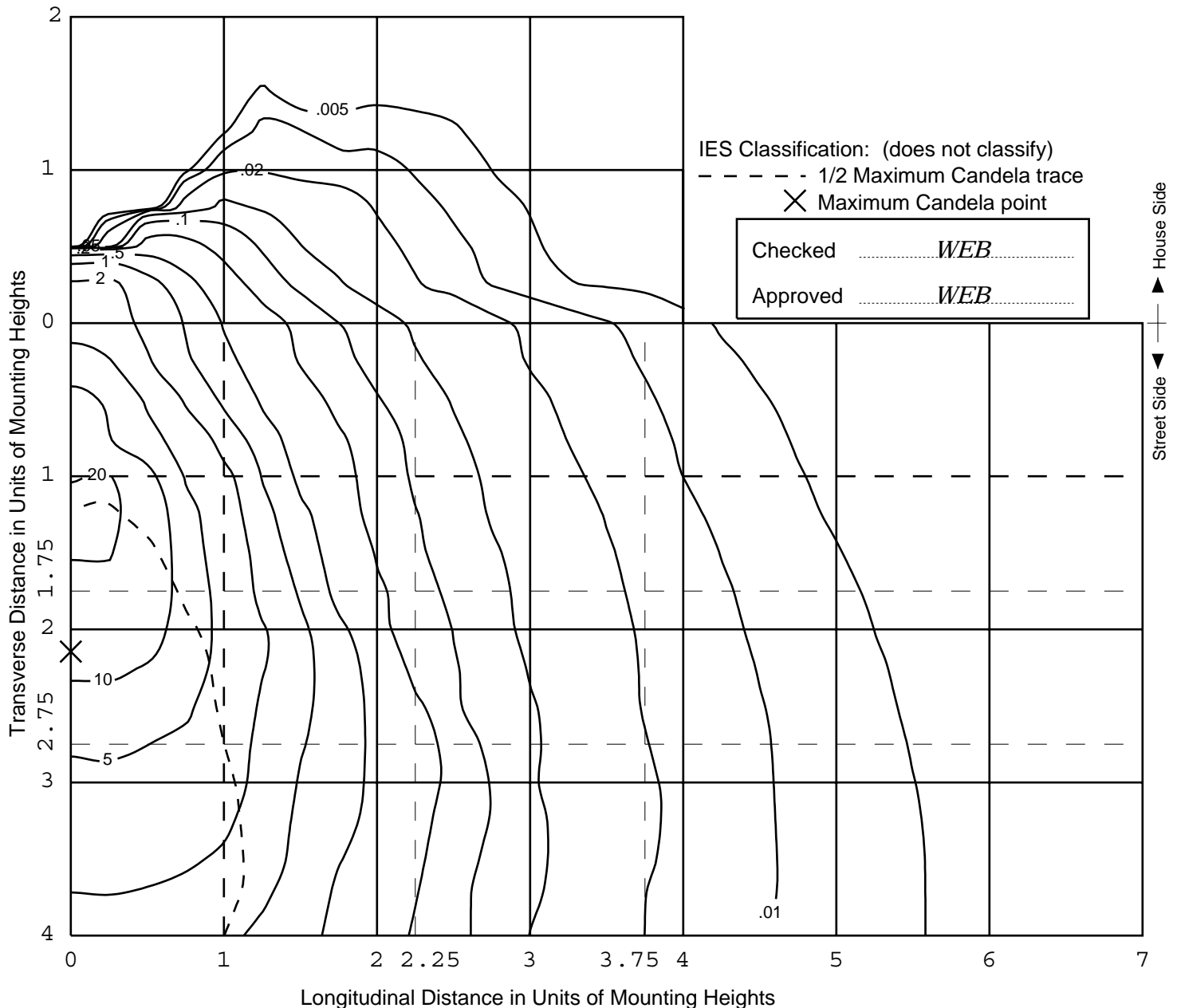
PHONE: (303)442-1255 • FAX: (303)449-5274 • E-MAIL: itl@itlboulder.com • WEBSITE: www.itlboulder.com

ISOFOOTCANDLE LINES OF HORIZONTAL ILLUMINATION

Values based on 1 foot mounting height.

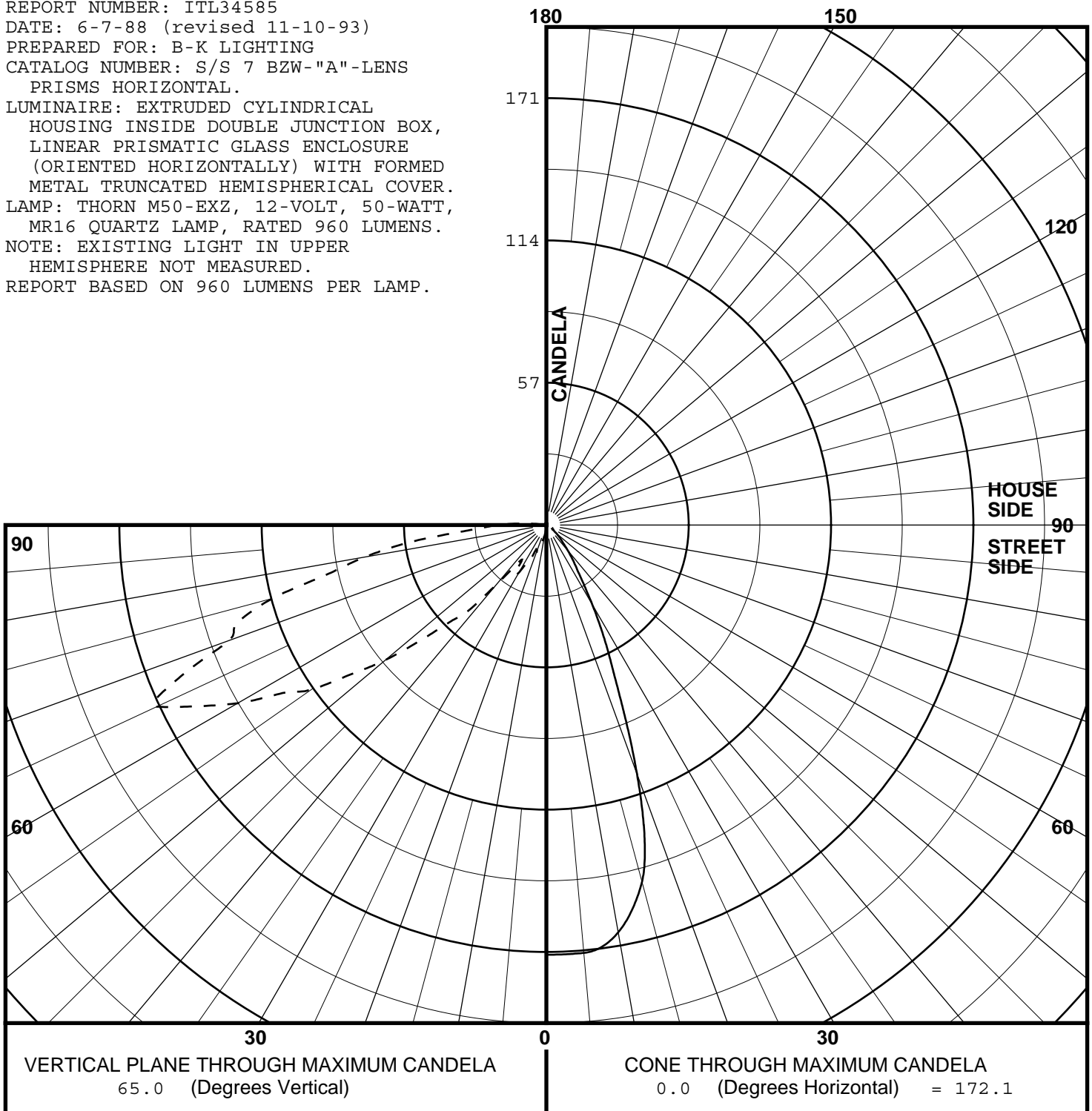


REPORT NUMBER: ITL34585
DATE: 6-7-88 (revised 11-10-93)
PREPARED FOR: B-K LIGHTING
CATALOG NUMBER: S/S 7 BZW-"A"-LENS
PRISMS HORIZONTAL.
LUMINAIRE: EXTRUDED CYLINDRICAL HOUSING INSIDE DOUBLE JUNCTION BOX, LINEAR PRISMATIC GLASS ENCLOSURE (ORIENTED HORIZONTALLY) WITH FORMED METAL TRUNCATED HEMISPHERICAL COVER.
LAMP: THORN M50-EXZ, 12-VOLT, 50-WATT, MR16 QUARTZ LAMP, RATED 960 LUMENS.
NOTE: EXISTING LIGHT IN UPPER HEMISPHERE NOT MEASURED.
REPORT BASED ON 960 LUMENS PER LAMP.



MAXIMUM PLANE AND MAXIMUM CONE PLOTS OF CANDELA

REPORT NUMBER: ITL34585
DATE: 6-7-88 (revised 11-10-93)
PREPARED FOR: B-K LIGHTING
CATALOG NUMBER: S/S 7 BZW-"A"-LENS
PRISMS HORIZONTAL.
LUMINAIRE: EXTRUDED CYLINDRICAL
HOUSING INSIDE DOUBLE JUNCTION BOX,
LINEAR PRISMATIC GLASS ENCLOSURE
(ORIENTED HORIZONTALLY) WITH FORMED
METAL TRUNCATED HEMISPHERICAL COVER.
LAMP: THORN M50-EXZ, 12-VOLT, 50-WATT,
MR16 QUARTZ LAMP, RATED 960 LUMENS.
NOTE: EXISTING LIGHT IN UPPER
HEMISPHERE NOT MEASURED.
REPORT BASED ON 960 LUMENS PER LAMP.





itl boulder
THE LIGHT CENTER OF THE INDUSTRY SINCE 1955

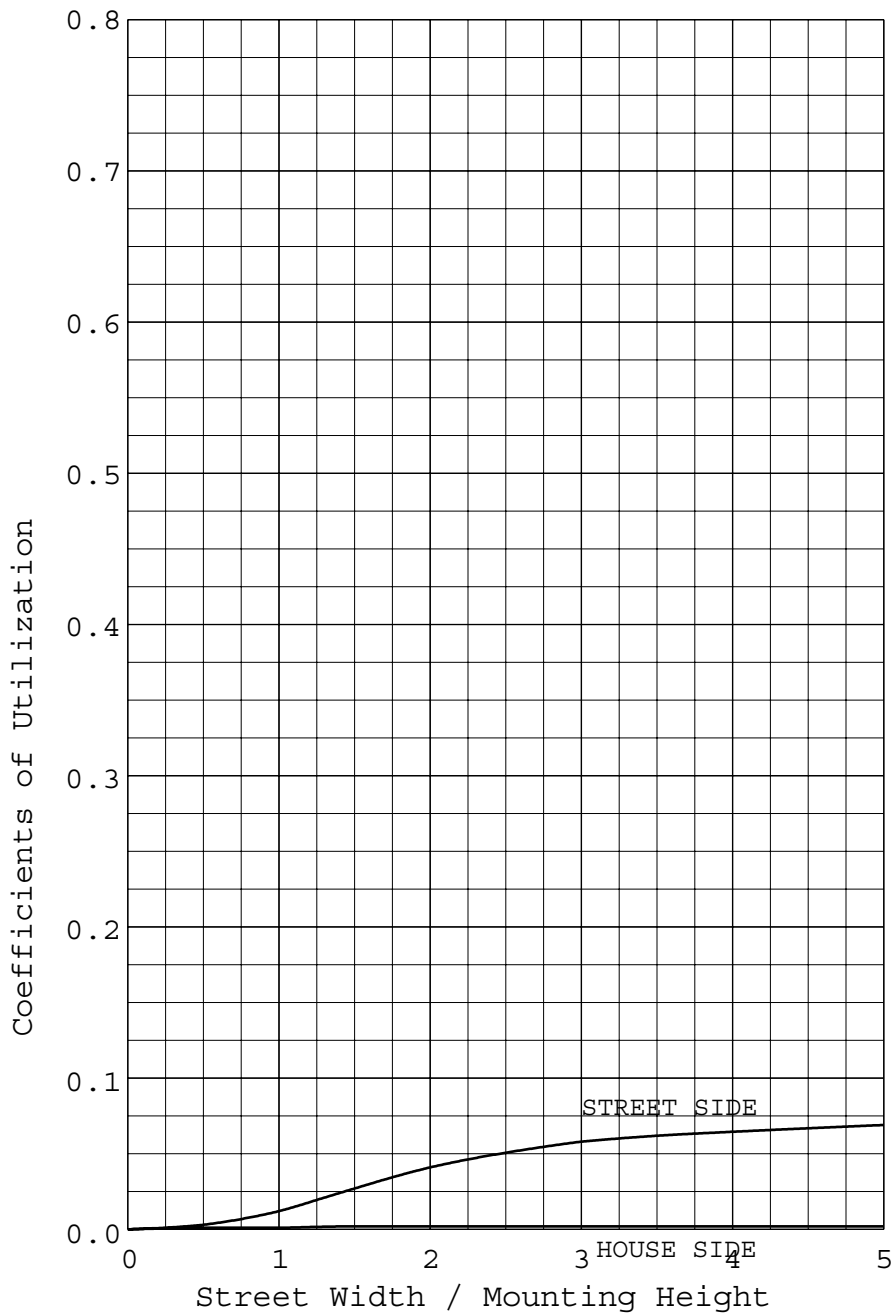
INDEPENDENT TESTING LABORATORIES, INC.
3386 LONGHORN ROAD, BOULDER, CO 80302 USA

PHONE: (303)442-1255 • FAX: (303)449-5274 • E-MAIL: itl@itlboulder.com • WEBSITE: www.itlboulder.com

REPORT NUMBER: ITL34585
PREPARED FOR: B-K LIGHTING

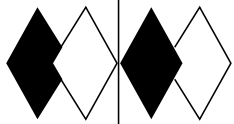
DATE: 6-7-88 (revised 11-10-93)

COEFFICIENTS OF UTILIZATION AND FLUX DISTRIBUTION



	LUMENS	PERCENT OF LAMP
DOWNWARD STREET SIDE	75	7.81
DOWNWARD HOUSE SIDE	2	0.21
DOWNWARD TOTAL	77	8.02
UPWARD STREET SIDE	1	0.10
UPWARD HOUSE SIDE	0	0.00
UPWARD TOTAL	1	0.10
TOTAL FLUX	78	8.13

ALL CANDELA, LUMENS AND COEFFICIENT OF UTILIZATION VALUES IN THIS REPORT ARE BASED ON RELATIVE PHOTOMETRY WHICH ASSUMES A BALLAST FACTOR OF 1.00. ANY CALCULATIONS PREPARED FROM THESE DATA SHOULD INCLUDE AN APPROPRIATE BALLAST FACTOR.



itl boulder
THE LIGHT CENTER OF THE INDUSTRY SINCE 1955

INDEPENDENT TESTING LABORATORIES, INC.
3386 LONGHORN ROAD, BOULDER, CO 80302 USA

PHONE: (303)442-1255 • FAX: (303)449-5274 • E-MAIL: itl@itlboulder.com • WEBSITE: www.itlboulder.com

REPORT NUMBER: ITL34585
PREPARED FOR: B-K LIGHTING

DATE: 6-7-88 (revised 11-10-93)

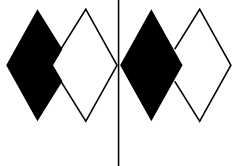
CANDELA TABULATION

STREET SIDE		LATERAL ANGLE										
		0.0	5.0	15.0	25.0	35.0	45.0	55.0	65.0	75.0	85.0	90.0
V E R T I C A L A N G L E												
	180.0	0.	0.	0.	0.	0.	0.	0.	0.	0.	0.	0.
	175.0	0.	0.	0.	0.	0.	0.	0.	0.	0.	0.	0.
	165.0	0.	0.	0.	0.	0.	0.	0.	0.	0.	0.	0.
	155.0	0.	0.	0.	0.	0.	0.	0.	0.	0.	0.	0.
	145.0	0.	0.	0.	0.	0.	0.	0.	0.	0.	0.	0.
	135.0	0.	0.	0.	0.	0.	0.	0.	0.	0.	0.	0.
	125.0	0.	0.	0.	0.	0.	0.	0.	0.	0.	0.	0.
	115.0	0.	0.	0.	0.	0.	0.	0.	0.	0.	0.	0.
	105.0	0.	1.	0.	0.	0.	0.	0.	0.	0.	0.	0.
	95.0	6.	6.	3.	2.	1.	1.	1.	0.	0.	0.	0.
	90.0	20.	22.	15.	5.	2.	1.	1.	1.	0.	0.	0.
	87.5	26.	31.	21.	7.	2.	2.	1.	1.	0.	0.	0.
	85.0	38.	40.	32.	12.	3.	2.	1.	1.	0.	0.	0.
	82.5	58.	57.	47.	19.	5.	2.	2.	1.	1.	0.	0.
	80.0	74.	69.	58.	21.	5.	3.	2.	1.	1.	0.	0.
	77.5	88.	84.	71.	28.	9.	4.	2.	1.	1.	0.	0.
	75.0	114.	118.	102.	41.	18.	5.	2.	1.	1.	1.	0.
	72.5	130.	136.	122.	46.	22.	6.	3.	1.	1.	1.	0.
	70.0	135.	141.	125.	52.	24.	6.	3.	2.	1.	1.	1.
	67.5	159.	169.	148.	61.	26.	7.	3.	2.	1.	1.	1.
	65.0<<	172.	172.	148.	62.	21.	8.	3.	2.	1.	1.	1.
	62.5	157.	167.	142.	58.	21.	10.	3.	2.	1.	1.	1.
	60.0	143.	153.	139.	58.	22.	10.	4.	2.	1.	1.	1.
	57.5	125.	133.	122.	55.	23.	10.	4.	2.	1.	1.	1.
	55.0	115.	120.	109.	54.	21.	12.	4.	2.	1.	1.	1.
	52.5	98.	101.	98.	50.	22.	11.	5.	2.	1.	1.	1.
	50.0	84.	86.	85.	48.	20.	11.	5.	2.	2.	1.	1.
	47.5	68.	69.	69.	41.	19.	10.	5.	2.	2.	1.	1.
	45.0	55.	57.	57.	37.	17.	9.	5.	2.	2.	1.	1.
	42.5	47.	49.	47.	30.	14.	8.	4.	3.	2.	1.	1.
	40.0	31.	32.	31.	20.	11.	7.	4.	3.	2.	2.	2.
37.5	21.	21.	20.	14.	10.	7.	5.	3.	2.	2.	2.	
35.0	17.	17.	16.	14.	10.	8.	5.	3.	2.	2.	2.	
32.5	24.	23.	23.	18.	13.	7.	5.	3.	2.	2.	2.	
30.0	22.	22.	22.	15.	10.	7.	4.	3.	2.	2.	2.	
27.5	17.	17.	16.	13.	10.	7.	4.	3.	2.	2.	2.	
25.0	16.	16.	15.	11.	8.	6.	4.	3.	2.	2.	2.	
20.0	11.	11.	11.	10.	9.	6.	4.	3.	3.	3.	3.	
15.0	8.	8.	8.	7.	6.	5.	4.	3.	3.	3.	3.	
10.0	4.	4.	4.	4.	4.	3.	3.	3.	3.	3.	3.	
5.0	3.	3.	3.	3.	3.	3.	3.	3.	3.	3.	3.	
0.0	3.	3.	3.	3.	3.	3.	3.	3.	3.	3.	3.	

||

PLANE OF MAXIMUM CANDELA

CONE OF MAXIMUM CANDELA



itl boulder
THE LIGHT CENTER OF THE INDUSTRY SINCE 1955

INDEPENDENT TESTING LABORATORIES, INC.
3386 LONGHORN ROAD, BOULDER, CO 80302 USA

PHONE: (303)442-1255 • FAX: (303)449-5274 • E-MAIL: itl@itlboulder.com • WEBSITE: www.itlboulder.com

REPORT NUMBER: ITL34585
PREPARED FOR: B-K LIGHTING

DATE: 6-7-88 (revised 11-10-93)

CANDELA TABULATION

	HOUSE SIDE		LATERAL ANGLE							
	95.0	105.0	115.0	125.0	135.0	145.0	155.0	165.0	175.0	180.0
180.0	0.	0.	0.	0.	0.	0.	0.	0.	0.	0.
175.0	0.	0.	0.	0.	0.	0.	0.	0.	0.	0.
165.0	0.	0.	0.	0.	0.	0.	0.	0.	0.	0.
155.0	0.	0.	0.	0.	0.	0.	0.	0.	0.	0.
145.0	0.	0.	0.	0.	0.	0.	0.	0.	0.	0.
135.0	0.	0.	0.	0.	0.	0.	0.	0.	0.	0.
125.0	0.	0.	0.	0.	0.	0.	0.	0.	0.	0.
115.0	0.	0.	0.	0.	0.	0.	0.	0.	0.	0.
105.0	0.	0.	0.	0.	0.	0.	0.	0.	0.	0.
95.0	0.	0.	0.	0.	0.	0.	0.	0.	0.	0.
90.0	0.	0.	0.	0.	0.	0.	0.	0.	0.	0.
87.5	0.	0.	0.	0.	0.	0.	0.	0.	0.	0.
85.0	0.	0.	0.	0.	0.	0.	0.	0.	0.	0.
82.5	0.	0.	0.	0.	0.	0.	0.	0.	0.	0.
80.0	0.	0.	0.	0.	0.	0.	0.	0.	0.	0.
77.5	0.	0.	0.	0.	0.	0.	0.	0.	0.	0.
75.0	0.	0.	0.	0.	0.	0.	0.	0.	0.	0.
72.5	0.	0.	0.	0.	0.	0.	0.	0.	0.	0.
70.0	0.	0.	0.	0.	0.	0.	0.	0.	0.	0.
V 67.5	0.	0.	0.	0.	0.	0.	0.	0.	0.	0.
E 65.0 <<	0.	0.	0.	0.	0.	0.	0.	0.	0.	0.
R 62.5	0.	0.	0.	0.	0.	0.	0.	0.	0.	0.
T 60.0	0.	0.	0.	0.	0.	0.	0.	0.	0.	0.
I 57.5	1.	0.	0.	0.	0.	0.	0.	0.	0.	0.
C 55.0	1.	0.	0.	0.	0.	0.	0.	0.	0.	0.
A 52.5	1.	0.	0.	0.	0.	0.	0.	0.	0.	0.
L 50.0	1.	1.	0.	0.	0.	0.	0.	0.	0.	0.
47.5	1.	1.	1.	0.	0.	0.	0.	0.	0.	0.
A 45.0	1.	1.	1.	0.	0.	0.	0.	0.	0.	0.
N 42.5	1.	1.	1.	1.	0.	0.	0.	0.	0.	0.
G 40.0	1.	1.	1.	1.	0.	0.	0.	0.	0.	0.
L 37.5	2.	1.	1.	1.	0.	0.	0.	0.	0.	0.
E 35.0	2.	2.	1.	1.	0.	0.	0.	0.	0.	0.
32.5	2.	2.	2.	1.	1.	0.	0.	0.	0.	0.
30.0	2.	2.	2.	1.	1.	0.	0.	0.	0.	0.
27.5	2.	3.	2.	2.	1.	0.	0.	0.	0.	0.
25.0	2.	3.	3.	2.	2.	1.	0.	0.	0.	0.
20.0	3.	3.	3.	3.	3.	2.	1.	1.	1.	0.
15.0	3.	3.	4.	4.	4.	3.	3.	2.	2.	2.
10.0	3.	3.	4.	4.	4.	4.	4.	4.	4.	4.
5.0	3.	3.	4.	4.	4.	4.	4.	4.	4.	4.
0.0	3.	3.	3.	3.	3.	3.	3.	3.	3.	3.

CONE OF MAXIMUM CANDELA