



INDEPENDENT TESTING LABORATORIES, INC.
3386 LONGHORN ROAD, BOULDER, CO 80302 USA

PHONE: (303)442-1255 • FAX: (303)449-5274 • E-MAIL: itl@itlboulder.com • WEBSITE: www.itlboulder.com

REPORT NUMBER: ITL59497

DATE: 11/15/07

PREPARED FOR: B-K LIGHTING

CATALOG NUMBER: SSL-MR-6-D-AJ

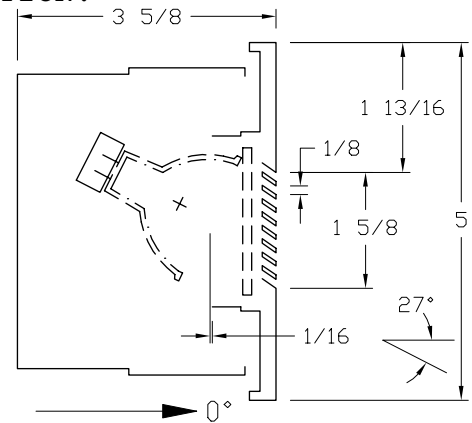
LUMINAIRE: CAST METAL HOUSING, FABRICATED DIFFUSE METAL ADJUSTABLE SOCKET MOUNTING BRACKET, MACHINED BLACK PAINTED METAL SOCKET BRACKET MOUNTING RING, CLEAR FLAT LINEAR PRISMATIC GLASS LENS IN CAST WHITE PAINTED LOUVERED METAL FACEPLATE, LENS PRISMS OUT AND VERTICAL.

LAMP: ONE 50-WATT MR-16 HALOGEN INCANDESCENT, EYE 12V50WEXT JR1501, TILTED 27-DEGREES BELOW HORIZONTAL POSITION.

MOUNTING: RECESSED

NOTE: THIS IS A RELATIVE PHOTOMETRIC REPORT BASED ON THE ACTUAL ABSOLUTE FLUX OUTPUT OF THE LAMP AT RATED INPUT VOLTAGE (12VAC) TO THE LAMP.

REPORT IS BASED ON 827 LUMENS PER LAMP.



CANDELA DISTRIBUTION

FLUX

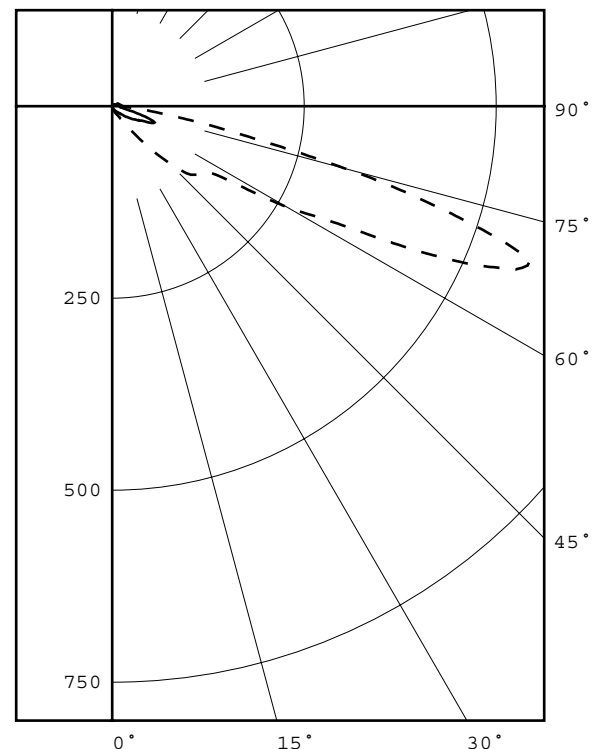
	0.0	45.0	90.0	135.0	180.0	
0	0	0	0	0	0	0
5	0	0	0	0	0	0
15	4	3	0	0	0	0
25	9	5	0	0	0	1
35	23	8	0	0	0	3
45	104	13	0	0	0	14
55	151	26	0	0	0	30
65	456	47	0	0	0	79
75	317	30	0	0	0	62
85	28	10	0	0	0	9
90	14	9	0	0	0	4
95	13	9	0	0	0	3
105	10	7	0	0	0	2
115	8	5	0	0	0	1
125	7	4	0	0	0	1
135	5	3	0	0	0	0
145	3	2	0	0	0	0
155	2	1	0	0	0	0
165	0	1	0	0	0	0
175	0	0	0	0	0	0
180	0	0	0	0	0	0

ZONAL LUMEN SUMMARY

ZONE	LUMENS	%LAMP	%FIXT
0- 30	1	0.2	0.7
0- 40	5	0.6	2.3
0- 60	49	6.0	23.1
0- 90	200	24.2	93.6
90-120	10	1.2	4.6
90-130	12	1.4	5.4
90-150	13	1.6	6.3
90-180	14	1.7	6.4
0-180	214	25.8	100.0

TOTAL LUMINAIRE EFFICIENCY = 25.8 %

CIE TYPE - DIRECT

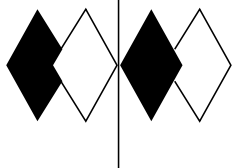


LEGEND:

0-deg: - - - - -
45-deg: = = = = =
90-deg: - - - - -

Checked N. WHITE

Approved R. BEATTIE



itl boulder
THE LIGHT CENTER OF THE INDUSTRY SINCE 1955

INDEPENDENT TESTING LABORATORIES, INC.
3386 LONGHORN ROAD, BOULDER, CO 80302 USA

PHONE: (303)442-1255 • FAX: (303)449-5274 • E-MAIL: itl@itlboulder.com • WEBSITE: www.itlboulder.com

REPORT NUMBER: ITL59497
PREPARED FOR: B-K LIGHTING

DATE: 11/15/07

CANDELA DISTRIBUTION
LATERAL ANGLE

	0.0	5.0	15.0	25.0	35.0	45.0	55.0	65.0	75.0	85.0	90.0	112.5	135.0	157.5
0.0	0	0	0	0	0	0	0	0	0	0	0	0	0	0
2.5	0	0	0	0	0	0	0	0	0	0	0	0	0	0
5.0	0	0	0	0	0	0	0	0	0	0	0	0	0	0
7.5	1	1	1	1	1	1	0	0	0	0	0	0	0	0
10.0	2	2	2	2	2	1	1	0	0	0	0	0	0	0
12.5	3	3	3	3	2	2	1	1	0	0	0	0	0	0
15.0	4	4	4	4	3	3	2	1	0	0	0	0	0	0
17.5	5	5	5	4	4	3	2	1	1	0	0	0	0	0
20.0	6	6	5	5	5	4	3	2	1	0	0	0	0	0
22.5	7	7	6	6	5	4	3	2	1	0	0	0	0	0
25.0	9	8	8	7	6	5	4	3	1	0	0	0	0	0
27.5	11	11	10	8	7	5	4	3	1	0	0	0	0	0
30.0	13	13	12	10	8	6	5	3	2	0	0	0	0	0
32.5	16	15	13	12	9	7	5	4	2	0	0	0	0	0
35.0	23	22	18	14	11	8	6	4	2	0	0	0	0	0
37.5	36	34	26	19	13	9	6	4	2	0	0	0	0	0
40.0	56	53	40	27	17	10	7	4	2	0	0	0	0	0
42.5	81	79	61	42	24	11	7	5	3	0	0	0	0	0
45.0	104	102	88	68	35	13	8	5	3	0	0	0	0	0
47.5	127	124	109	92	50	15	8	5	3	1	0	0	0	0
50.0	139	136	124	116	67	18	9	6	3	1	0	0	0	0
52.5	146	146	135	136	83	22	9	6	3	1	0	0	0	0
55.0	151	151	136	152	101	26	10	6	4	1	0	0	0	0
57.5	179	172	148	163	106	31	11	7	4	1	0	0	0	0
60.0	262	245	211	208	120	35	11	7	4	1	0	0	0	0
60.5	275	258	225	220	123	37	11	7	4	1	0	0	0	0
61.0	288	270	237	231	123	38	12	7	4	1	0	0	0	0
61.5	300	280	247	244	124	39	12	7	4	1	0	0	0	0
62.0	314	293	259	256	125	40	11	7	4	1	0	0	0	0
62.5	331	308	272	268	128	40	11	7	4	1	0	0	0	0
63.0	352	328	291	286	133	41	11	7	4	1	0	0	0	0
63.5	380	353	315	308	140	42	11	8	4	1	0	0	0	0
64.0	406	379	342	334	151	43	11	8	4	1	0	0	0	0
64.5	432	403	364	361	164	44	11	8	4	1	0	0	0	0
65.0	456	425	386	387	178	47	12	8	4	1	0	0	0	0
65.5	479	446	408	409	189	49	12	8	4	1	0	0	0	0
66.0	501	465	427	431	200	52	12	8	4	1	0	0	0	0
66.5	520	482	442	454	208	54	12	8	4	1	0	0	0	0
67.0	536	498	461	473	217	56	12	7	4	1	0	0	0	0
67.5	551	515	480	491	225	57	12	7	4	1	0	0	0	0
68.0	567	529	498	510	231	58	12	7	4	1	0	0	0	0
68.5	574	534	508	523	236	59	12	7	4	1	0	0	0	0
69.0	579	539	516	526	236	59	12	7	4	1	0	0	0	0
69.5	580	540	522	526	233	58	12	7	4	1	0	0	0	0
70.0	572	534	521	521	230	57	12	7	4	1	0	0	0	0
70.5	556	518	509	509	224	55	12	7	4	1	0	0	0	0
71.0	536	500	493	489	212	53	12	7	4	1	0	0	0	0
71.5	511	478	475	469	200	51	12	7	4	1	0	0	0	0
72.0	484	453	451	442	189	48	12	7	4	1	0	0	0	0
72.5	460	430	428	416	174	45	12	7	5	1	0	0	0	0
73.0	432	403	404	390	160	41	12	7	5	1	0	0	0	0
73.5	406	378	381	364	145	38	11	7	5	1	0	0	0	0
74.0	380	352	358	337	131	35	11	7	5	1	0	0	0	0
74.5	351	325	332	311	117	32	11	7	5	1	0	0	0	0
75.0	317	294	297	280	103	30	11	7	5	1	0	0	0	0
75.5	284	264	264	252	91	27	11	7	5	1	0	0	0	0
76.0	252	237	236	222	79	24	11	7	5	1	0	0	0	0
76.5	225	212	211	197	69	22	11	7	5	1	0	0	0	0
77.0	198	188	187	174	60	20	11	6	5	1	0	0	0	0
77.5	178	169	166	155	53	19	11	6	5	1	0	0	0	0
78.0	160	152	148	137	48	18	10	6	5	1	0	0	0	0
78.5	144	137	133	121	42	17	10	6	5	1	0	0	0	0
79.0	129	122	118	108	38	16	10	6	5	2	0	0	0	0
79.5	113	107	104	96	33	15	10	6	4	2	0	0	0	0
80.0	99	93	91	83	30	14	10	6	4	2	0	0	0	0



INDEPENDENT TESTING LABORATORIES, INC.
3386 LONGHORN ROAD, BOULDER, CO 80302 USA

PHONE: (303)442-1255 • FAX: (303)449-5274 • E-MAIL: itl@itlboulder.com • WEBSITE: www.itlboulder.com

REPORT NUMBER: ITL59497
PREPARED FOR: B-K LIGHTING

DATE: 11/15/07

CANDELA DISTRIBUTION
LATERAL ANGLE

	0.0	5.0	15.0	25.0	35.0	45.0	55.0	65.0	75.0	85.0	90.0	112.5	135.0	157.5
82.5	53	51	47	39	19	12	9	6	4	2	0	0	0	0
85.0	28	27	25	22	14	10	8	6	4	2	0	0	0	0
87.5	16	16	15	14	12	10	8	6	4	2	0	0	0	0
90.0	14	14	14	12	11	9	8	6	4	1	0	0	0	0
92.5	13	13	13	12	10	9	7	6	4	1	0	0	0	0
95.0	13	13	12	11	10	9	7	5	3	1	0	0	0	0
97.5	12	12	11	11	9	8	7	5	3	1	0	0	0	0
100.0	11	11	11	10	9	8	6	4	3	0	0	0	0	0
102.5	11	11	10	9	8	7	6	4	2	0	0	0	0	0
105.0	10	10	10	9	8	7	5	4	2	0	0	0	0	0
107.5	9	9	9	8	8	6	5	4	2	0	0	0	0	0
110.0	9	9	9	8	7	6	5	3	2	0	0	0	0	0
112.5	9	9	8	8	7	6	4	3	1	0	0	0	0	0
115.0	8	8	8	7	6	5	4	3	1	0	0	0	0	0
117.5	8	8	7	7	6	5	4	3	1	0	0	0	0	0
120.0	7	7	7	7	6	5	4	2	1	0	0	0	0	0
122.5	7	7	7	6	6	5	4	2	1	0	0	0	0	0
125.0	7	7	6	6	5	4	3	2	1	0	0	0	0	0
127.5	6	6	6	5	5	4	3	2	1	0	0	0	0	0
130.0	6	6	6	5	4	4	3	2	1	0	0	0	0	0
132.5	5	5	5	5	4	3	3	2	1	0	0	0	0	0
135.0	5	5	5	4	4	3	2	2	1	0	0	0	0	0
137.5	5	5	4	4	4	3	2	1	1	0	0	0	0	0
140.0	4	4	4	4	3	3	2	1	1	0	0	0	0	0
142.5	4	4	4	3	3	2	2	1	1	0	0	0	0	0
145.0	3	3	3	3	3	2	2	1	1	0	0	0	0	0
147.5	3	3	3	3	2	2	2	1	1	0	0	0	0	0
150.0	3	3	3	2	2	2	1	1	0	0	0	0	0	0
152.5	2	2	2	2	2	2	1	1	0	0	0	0	0	0
155.0	2	2	2	2	2	1	1	1	0	0	0	0	0	0
157.5	2	2	2	2	2	1	1	1	0	0	0	0	0	0
160.0	1	1	2	1	1	1	1	1	0	0	0	0	0	0
162.5	0	1	1	1	1	1	1	0	0	0	0	0	0	0
165.0	0	0	1	1	1	1	1	0	0	0	0	0	0	0
167.5	0	0	1	1	1	1	0	0	0	0	0	0	0	0
170.0	0	0	0	1	0	0	0	0	0	0	0	0	0	0
172.5	0	0	0	0	0	0	0	0	0	0	0	0	0	0
175.0	0	0	0	0	0	0	0	0	0	0	0	0	0	0
177.5	0	0	0	0	0	0	0	0	0	0	0	0	0	0
180.0	0	0	0	0	0	0	0	0	0	0	0	0	0	0



INDEPENDENT TESTING LABORATORIES, INC.
3386 LONGHORN ROAD, BOULDER, CO 80302 USA

PHONE: (303)442-1255 • FAX: (303)449-5274 • E-MAIL: itl@itlboulder.com • WEBSITE: www.itlboulder.com

REPORT NUMBER: ITL59497
PREPARED FOR: B-K LIGHTING

DATE: 11/15/07

CANDELA DISTRIBUTION
LATERAL ANGLE

	180.0
0.0	0
2.5	0
5.0	0
7.5	0
10.0	0
12.5	0
15.0	0
17.5	0
20.0	0
22.5	0
25.0	0
27.5	0
30.0	0
32.5	0
35.0	0
37.5	0
40.0	0
42.5	0
45.0	0
47.5	0
50.0	0
52.5	0
55.0	0
57.5	0
60.0	0
60.5	0
61.0	0
61.5	0
62.0	0
62.5	0
63.0	0
63.5	0
64.0	0
64.5	0
65.0	0
65.5	0
66.0	0
66.5	0
67.0	0
67.5	0
68.0	0
68.5	0
69.0	0
69.5	0
70.0	0
70.5	0
71.0	0
71.5	0
72.0	0
72.5	0
73.0	0
73.5	0
74.0	0
74.5	0
75.0	0
75.5	0
76.0	0
76.5	0
77.0	0
77.5	0
78.0	0
78.5	0
79.0	0
79.5	0
80.0	0



INDEPENDENT TESTING LABORATORIES, INC.
3386 LONGHORN ROAD, BOULDER, CO 80302 USA

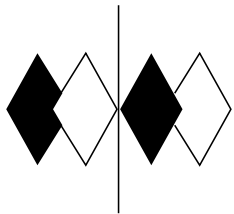
PHONE: (303)442-1255 • FAX: (303)449-5274 • E-MAIL: itl@itlboulder.com • WEBSITE: www.itlboulder.com

REPORT NUMBER: ITL59497
PREPARED FOR: B-K LIGHTING

DATE: 11/15/07

CANDELA DISTRIBUTION
LATERAL ANGLE

	180.0
82.5	0
85.0	0
87.5	0
90.0	0
92.5	0
95.0	0
97.5	0
100.0	0
102.5	0
105.0	0
107.5	0
110.0	0
112.5	0
115.0	0
117.5	0
120.0	0
122.5	0
125.0	0
127.5	0
130.0	0
132.5	0
135.0	0
137.5	0
140.0	0
142.5	0
145.0	0
147.5	0
150.0	0
152.5	0
155.0	0
157.5	0
160.0	0
162.5	0
165.0	0
167.5	0
170.0	0
172.5	0
175.0	0
177.5	0
180.0	0



itl boulder
THE LIGHT CENTER OF THE INDUSTRY SINCE 1955

INDEPENDENT TESTING LABORATORIES, INC.
 3386 LONGHORN ROAD, BOULDER, CO 80302 USA

PHONE: (303)442-1255 • FAX: (303)449-5274 • E-MAIL: itl@itlboulder.com • WEBSITE: www.itlboulder.com

REPORT NUMBER: ITL59497

DATE: 11/15/07

PREPARED FOR: B-K LIGHTING

COEFFICIENTS OF UTILIZATION - ZONAL CAVITY METHOD

EFFECTIVE FLOOR CAVITY REFLECTANCE 0.20

RC	80				70				50			30			10			0
RW	70	50	30	10	70	50	30	10	50	30	10	50	30	10	50	30	10	0
0	30	30	30	30	29	29	29	29	27	27	27	26	26	26	25	25	25	24
1	25	23	22	20	24	23	21	19	21	20	18	20	19	18	19	18	17	16
2	21	18	15	13	20	17	15	13	16	14	12	15	13	12	14	12	11	10
3	18	14	11	9	18	14	11	8	13	10	8	12	9	8	11	9	7	6
4	16	12	9	6	15	11	8	6	10	8	6	9	7	5	9	7	5	4
5	14	10	7	4	14	9	7	4	9	6	4	8	6	4	7	5	4	3
6	13	9	5	3	12	8	5	3	7	5	3	7	5	3	6	4	3	2
7	12	7	5	3	11	7	4	3	7	4	2	6	4	2	5	4	2	1
8	11	7	4	2	10	6	4	2	6	4	2	5	3	2	5	3	2	1
9	10	6	3	2	10	6	3	2	5	3	2	5	3	1	4	3	1	1
10	10	5	3	1	9	5	3	1	5	3	1	4	3	1	4	2	1	1

ALL CANDELA, LUMENS, LUMINANCE, COEFFICIENT OF UTILIZATION AND VCP VALUES IN THIS REPORT ARE BASED ON RELATIVE PHOTOMETRY WHICH ASSUMES A BALLAST FACTOR OF 1.000. ANY CALCULATIONS PREPARED FROM THESE DATA SHOULD INCLUDE AN APPROPRIATE BALLAST FACTOR.

NOTE: THE ZONAL CAVITY CALCULATION TECHNIQUE IS ACCURATE WHEN LUMINAIRES WITH SYMMETRIC CANDELA DISTRIBUTIONS ARE EMPLOYED AND WHEN THE LUMINAIRES ARE LOCATED SYMMETRICALLY THROUGHOUT THE ROOM. THIS UNIT HAS SPECIAL CHARACTERISTICS AND THEREFORE THESE COEFFICIENTS SHOULD BE USED WITH CAUTION.