



INDEPENDENT TESTING LABORATORIES, INC.
3386 LONGHORN ROAD, BOULDER, CO 80302 USA

PHONE: (303)442-1255 • FAX: (303)449-5274 • E-MAIL: itl@itlboulder.com • WEBSITE: www.itlboulder.com

REPORT NUMBER: ITL59494

DATE: 11/14/07

PREPARED FOR: B-K LIGHTING

CATALOG NUMBER: CD-SSL-MR-6-C

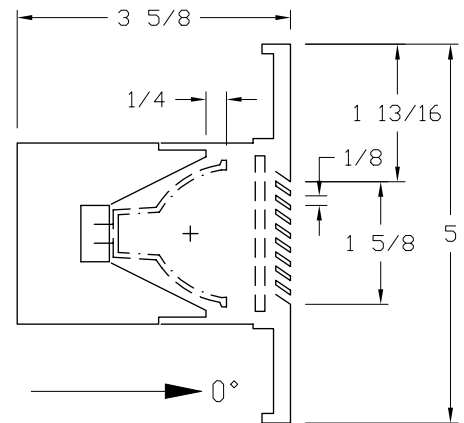
LUMINAIRE: MACHINED BLACK PAINTED METAL HOUSING AND FACEPLATE MOUNTING RING, CLEAR FLAT LINEAR PRISMATIC GLASS LENS IN CAST WHITE PAINTED LOUVERED METAL FACEPLATE, LENS PRISMS OUT AND VERTICAL.

LAMP: ONE 50-WATT MR-16 HALOGEN INCANDESCENT, EYE 12V50WEXT JR1501, HORIZONTAL POSITION.

MOUNTING: RECESSED

NOTE: THIS IS A RELATIVE PHOTOMETRIC REPORT BASED ON THE ACTUAL ABSOLUTE FLUX OUTPUT OF THE LAMP AT RATED INPUT VOLTAGE (12VAC) TO THE LAMP.

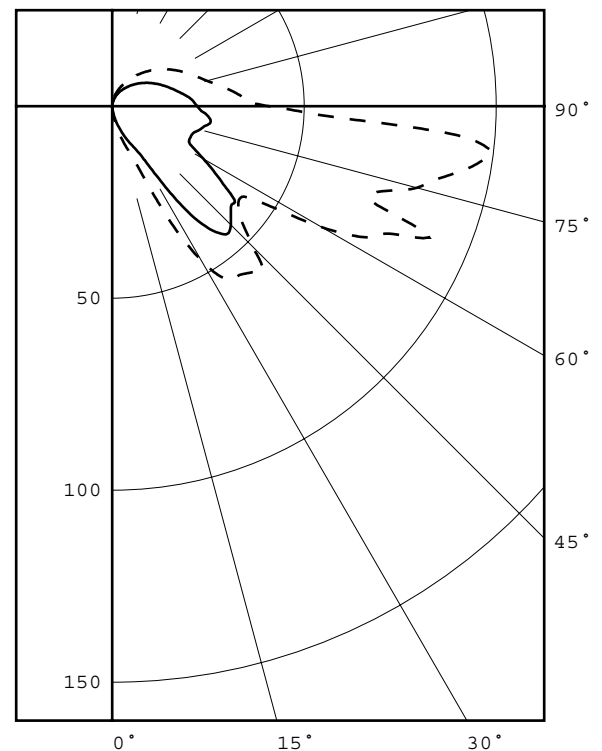
REPORT IS BASED ON 827 LUMENS PER LAMP.



CANDELA DISTRIBUTION

FLUX

	0.0	45.0	90.0	135.0	180.0	
0	0	0	0	0	0	0
5	1	0	0	0	0	0
15	8	5	0	0	0	1
25	25	10	0	0	0	3
35	55	32	0	0	0	9
45	52	44	0	0	0	13
55	41	35	0	0	0	12
65	79	22	0	0	0	16
75	82	24	0	0	0	18
85	92	25	0	0	0	20
90	34	22	0	0	0	
95	33	21	0	0	0	11
105	26	17	0	0	0	8
115	21	14	0	0	0	6
125	17	11	0	0	0	4
135	13	8	0	0	0	3
145	9	6	0	0	0	2
155	6	4	0	0	0	1
165	3	2	0	0	0	0
175	0	0	0	0	0	0
180	0	0	0	0	0	0



LEGEND:

0-deg: - - - - -
45-deg: = = = = =
90-deg: - - - - -

ZONAL LUMEN SUMMARY

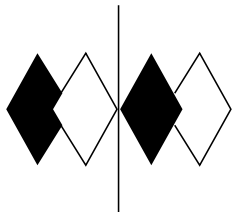
ZONE	LUMENS	%LAMP	%FIXT
0- 30	3	0.4	2.8
0- 40	12	1.5	9.9
0- 60	37	4.5	29.7
0- 90	91	11.0	72.4
90-120	25	3.0	19.7
90-130	29	3.5	23.1
90-150	34	4.1	26.7
90-180	35	4.2	27.6
0-180	126	15.2	100.0

TOTAL LUMINAIRE EFFICIENCY = 15.2 %

CIE TYPE - SEMI-DIRECT

Checked N. WHITE

Approved R. BEATTIE



itl boulder
THE LIGHT CENTER OF THE INDUSTRY SINCE 1955

INDEPENDENT TESTING LABORATORIES, INC.
3386 LONGHORN ROAD, BOULDER, CO 80302 USA

PHONE: (303)442-1255 • FAX: (303)449-5274 • E-MAIL: itl@itlboulder.com • WEBSITE: www.itlboulder.com

REPORT NUMBER: ITL59494
PREPARED FOR: B-K LIGHTING

DATE: 11/14/07

CANDELA DISTRIBUTION

	0.0	22.5	45.0	67.5	90.0	112.5	135.0	157.5	180.0
0.0	0	0	0	0	0	0	0	0	0
5.0	1	1	0	0	0	0	0	0	0
10.0	4	4	2	1	0	0	0	0	0
15.0	8	7	5	2	0	0	0	0	0
20.0	12	11	7	3	0	0	0	0	0
25.0	25	18	10	4	0	0	0	0	0
30.0	46	37	14	5	0	0	0	0	0
35.0	55	51	32	7	0	0	0	0	0
40.0	57	54	43	8	0	0	0	0	0
45.0	52	56	44	10	0	0	0	0	0
50.0	43	44	40	12	0	0	0	0	0
55.0	41	37	35	13	0	0	0	0	0
60.0	63	40	27	14	0	0	0	0	0
65.0	79	46	22	16	0	0	0	0	0
70.0	72	46	22	13	0	0	0	0	0
75.0	82	60	24	8	0	0	0	0	0
80.0	94	82	26	7	0	0	0	0	0
85.0	92	94	25	9	0	0	0	0	0
90.0	34	33	22	11	0	0	0	0	0
95.0	33	32	21	10	0	0	0	0	0
100.0	29	27	19	9	0	0	0	0	0
105.0	26	24	17	7	0	0	0	0	0
110.0	23	21	15	7	0	0	0	0	0
115.0	21	19	14	6	0	0	0	0	0
120.0	19	17	12	5	0	0	0	0	0
125.0	17	15	11	5	0	0	0	0	0
130.0	15	13	9	4	0	0	0	0	0
135.0	13	12	8	4	0	0	0	0	0
140.0	11	10	7	3	0	0	0	0	0
145.0	9	8	6	3	0	0	0	0	0
150.0	7	7	5	2	0	0	0	0	0
155.0	6	5	4	2	0	0	0	0	0
160.0	4	4	3	1	0	0	0	0	0
165.0	3	3	2	1	0	0	0	0	0
170.0	2	2	1	0	0	0	0	0	0
175.0	0	0	0	0	0	0	0	0	0
180.0	0	0	0	0	0	0	0	0	0



itl boulder
THE LIGHT CENTER OF THE INDUSTRY SINCE 1955

INDEPENDENT TESTING LABORATORIES, INC.
3386 LONGHORN ROAD, BOULDER, CO 80302 USA

PHONE: (303)442-1255 • FAX: (303)449-5274 • E-MAIL: itl@itlboulder.com • WEBSITE: www.itlboulder.com

REPORT NUMBER: ITL59494
PREPARED FOR: B-K LIGHTING

DATE: 11/14/07

ZONAL LUMEN SUMMARY

0- 5	0.
5- 10	0.
10- 15	0.
15- 20	0.
20- 25	1.
25- 30	2.
30- 35	4.
35- 40	5.
40- 45	6.
45- 50	6.
50- 55	6.
55- 60	6.
60- 65	7.
65- 70	8.
70- 75	8.
75- 80	10.
80- 85	12.
85- 90	8.
90- 95	6.
95-100	5.
100-105	4.
105-110	4.
110-115	3.
115-120	3.
120-125	2.
125-130	2.
130-135	2.
135-140	1.
140-145	1.
145-150	1.
150-155	0.
155-160	0.
160-165	0.
165-170	0.
170-175	0.
175-180	0.



itl boulder
THE LIGHT CENTER OF THE INDUSTRY SINCE 1955

INDEPENDENT TESTING LABORATORIES, INC.
3386 LONGHORN ROAD, BOULDER, CO 80302 USA

PHONE: (303)442-1255 • FAX: (303)449-5274 • E-MAIL: itl@itlboulder.com • WEBSITE: www.itlboulder.com

REPORT NUMBER: ITL59494

DATE: 11/14/07

PREPARED FOR: B-K LIGHTING

COEFFICIENTS OF UTILIZATION - ZONAL CAVITY METHOD

EFFECTIVE FLOOR CAVITY REFLECTANCE 0.20

RC RW	80				70				50			30			10			0
	70	50	30	10	70	50	30	10	50	30	10	50	30	10	50	30	10	0
0	17	17	17	17	16	16	16	16	15	15	15	13	13	13	12	12	12	11
1	15	13	12	11	14	13	12	11	11	10	10	10	9	9	9	8	8	7
2	13	11	10	8	12	10	9	8	9	8	7	8	7	6	7	6	5	5
3	11	9	8	6	11	9	7	6	8	6	5	7	6	5	6	5	4	4
4	10	8	6	5	10	8	6	5	7	5	4	6	5	4	5	4	3	3
5	9	7	5	4	9	7	5	4	6	4	3	5	4	3	4	3	3	2
6	9	6	5	3	8	6	4	3	5	4	3	4	3	3	4	3	2	2
7	8	5	4	3	7	5	4	3	5	3	2	4	3	2	3	2	2	1
8	7	5	3	2	7	5	3	2	4	3	2	4	3	2	3	2	2	1
9	7	4	3	2	6	4	3	2	4	3	2	3	2	2	3	2	1	1
10	6	4	3	2	6	4	3	2	3	2	2	3	2	1	3	2	1	1

ALL CANDELA, LUMENS, LUMINANCE, COEFFICIENT OF UTILIZATION AND VCP VALUES IN THIS REPORT ARE BASED ON RELATIVE PHOTOMETRY WHICH ASSUMES A BALLAST FACTOR OF 1.000. ANY CALCULATIONS PREPARED FROM THESE DATA SHOULD INCLUDE AN APPROPRIATE BALLAST FACTOR.

NOTE: THE ZONAL CAVITY CALCULATION TECHNIQUE IS ACCURATE WHEN LUMINAIRES WITH SYMMETRIC CANDELA DISTRIBUTIONS ARE EMPLOYED AND WHEN THE LUMINAIRES ARE LOCATED SYMMETRICALLY THROUGHOUT THE ROOM. THIS UNIT HAS SPECIAL CHARACTERISTICS AND THEREFORE THESE COEFFICIENTS SHOULD BE USED WITH CAUTION.