

DATE:

PROJECT:

TYPE:

CATALOG NUMBER LOGIC:



Housing may be shipped ahead upon request.

\*Yields up to 60% loss in output

\*\*120V only

**CATALOG NUMBER LOGIC**

Example: YK - I - LED - A2790 - BLP - SD - B1 - BLW - 010 - MT

**MATERIAL**

(Blank) - Aluminum B - Brass S - Stainless Steel

**SERIES**

YK - Yukon Commercial Steplight

**STYLE**

I - Indirect

**SOURCE**

LED - Linear Array

**LED TYPE**

A2780 - 12W/2700K/80CRI A2790 - 12W/2700K/90CRI

A3080 - 12W/3000K/80CRI A3090 - 12W/3000K/90CRI

A3580 - 12W/3500K/80CRI A3590 - 12W/3500K/90CRI

A4080 - 12W/4000K/80CRI A4090 - 12W/4000K/90CRI

**FINISH (See page 2 for full-color swatches)**

Standard Finishes (BZP, BZW, BLP, BLW, WHP, WHW, SAP, VER)

Premium Finish (ABP, AMG, AQW, BCM, BGE, BPP, CAP, CMG, CRM, HUG, NBP, OCP, RMG, SDS, SMG, TXF, WCP, WIR)

Also available in RAL Finishes

Brass Finishes (MAC, POL, MIT)

Stainless Steel Finishes (MAC, POL)

**FACEPLATE**

SD - Standard LD - Louvered VR - Visor

**BACKPLATE**

B1 - Stepped (For use with SD and VR Faceplate)

B2 - Curved (For use with SD and LD Faceplate)

**BACKPLATE FINISH**

(Blank) - Backplate finish matches faceplate finish

BLW\* - Black Wrinkle finish for glare reduction

**CONTROL TYPE**

ELV - 12W Dimming Driver (For use with Electronic Low Voltage Dimmer)\*\*

INC - 12W Dimming Driver (For use with Incandescent Dimmer)\*\*

010 - 12W Dimming Driver (For use with 0-10 Dimmer)

**INPUT VOLTAGE**

MT - 120-277 VAC

DATE: \_\_\_\_\_ PROJECT: \_\_\_\_\_ TYPE: \_\_\_\_\_

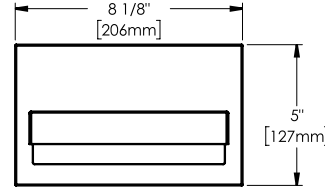
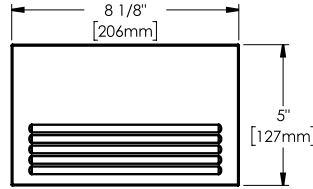
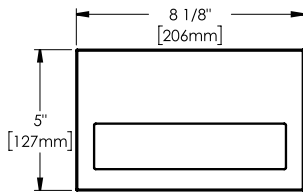
\* Fixture Weight ≈ 4.09lbs max

**Faceplate**

SD - Standard

LD - Louvered

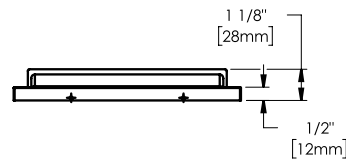
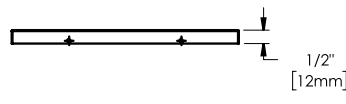
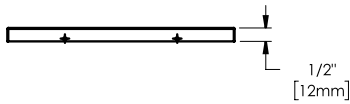
VR - Visor



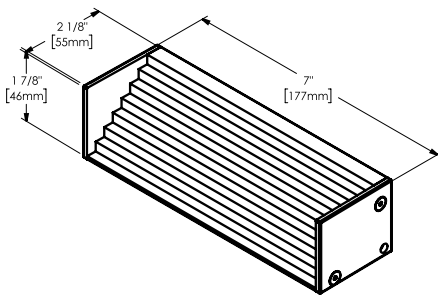
SD - Standard

LD - Louvered

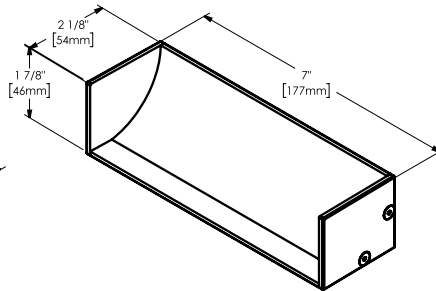
VR - Visor



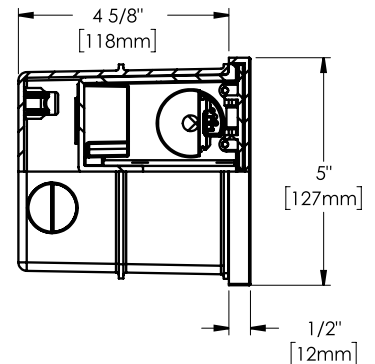
**Backplate**



B1 - Stepped



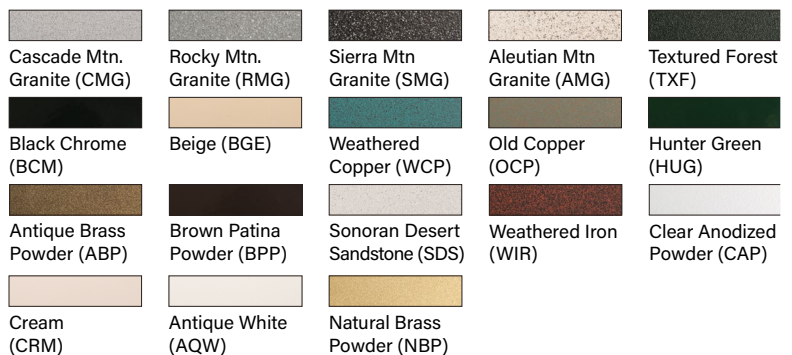
B2 - Curved



**STANDARD FINISHES**



**PREMIUM FINISHES**



[Click Here](#) to view larger, full-color swatches of all available finishes on our website.

DATE:	PROJECT:	TYPE:
-------	----------	-------

ACCESSORIES (Configure separately)

## SPECIFICATIONS

ELECTRICAL	WATTAGE	12W
	OPERATING VOLTAGE	120-277 VAC
	WIRING	18GA Stranded, XLPE, 150°C, 600V wire.
	DRIVER	One (1) 440mA, Class II, constant current integral driver. 50/60 Hz. >0.9 Power Factor, 5A in-rush current (typical at 120 VAC), ≤20%THD (nominal at 120 VAC full load). Output over-voltage, over-current, and short circuit protection with auto recovery. Dimming driver for use with 0-10V, Incandescent, Standard TRIAC, or ELV dimmers. 1-100% range. *TRIAC/ELV dimming at 120 VAC only.
PHYSICAL	MATERIALS	Furnished in copper-free aluminum (6061-T6)
	HOUSING	Corrosion-free composite, made from high strength, thermo-formed, sheet molded polyester compound. Glass reinforced, flame retardant with knockout plugs and (4) side flats for 1/2" or 3/4" conduit adapters.
	WATER MANAGEMENT	Anti-condensation and corrosion vent equalizes fixture pressure and eliminates potential for damage to internal components.
	BACKPLATE	Interchangeable backplate options.
	FACEPLATE	Fully machined. Offered with non-visible, tamper-resistant set screws.
	FINISH	StarGuard®, our exclusive RoHs compliant, 15 stage chromate-free process cleans and conversion coats aluminum components prior to application of Class 'A' TGIC polyester powder coating. Brass components are available in powder coat or handcrafted metal finish. Stainless steel components are available in handcrafted metal finish.
	WARRANTY	5-year limited warranty.
CERTIFICATION & LISTING	UL tested to IESNA LM-79. UL Listed. Certified to CAN/CSA/ANSI Standards. RoHS compliant. Suitable for indoor or outdoor use, in wet locations, and for installation within 4' of the ground. For use in concrete. IP66 Rated. Made in the USA.	



# LAMP & DRIVER DATA (YUKON INDIRECT - page 1 of 2)

DATE: \_\_\_\_\_ PROJECT: \_\_\_\_\_ TYPE: \_\_\_\_\_

## LM79 DATA

## OPTICAL DATA

BK No.	CCT (Typ.)	CRI (Typ.)	Fixture Watts	L70 Data	LED Orientation	Backplate	Faceplate	Accessory/ Optic	Roadway Class	Bug	Del. Lumens	Multiplier
A2780	2700	80	12	50,000	0°	B1	SD	1	Type IV	B0 U3 G1	381	0.92
<b>A2780</b>	<b>2700</b>	<b>80</b>	<b>12</b>	<b>50,000</b>	<b>30°</b>	<b>B1</b>	<b>SD</b>	<b>1</b>	<b>Type III</b>	<b>B0 U3 G1</b>	<b>362</b>	0.92
A2780	2700	80	12	50,000	60°	B1	SD	1	Type III	B0 U3 G1	252	0.92
<b>A2780</b>	<b>2700</b>	<b>80</b>	<b>12</b>	<b>50,000</b>	<b>0°</b>	<b>B1</b>	<b>SD</b>	<b>2</b>	<b>Type III</b>	<b>B0 U3 G1</b>	<b>320</b>	0.92
A2780	2700	80	12	50,000	0°	B2	SD	1	Type IV	B0 U3 G1	443	0.92
<b>A2780</b>	<b>2700</b>	<b>80</b>	<b>12</b>	<b>50,000</b>	<b>0°</b>	<b>B2</b>	<b>LD</b>	<b>1</b>	<b>Type III</b>	<b>B0 U2 G1</b>	<b>220</b>	0.92
A2780	2700	80	12	50,000	0°	B1	VR	1	Type II	B0 U2 G1	237	0.92
A3080	3000	80	12	50,000	0°	B1	SD	1	Type IV	B0 U3 G1	390	0.94
<b>A3080</b>	<b>3000</b>	<b>80</b>	<b>12</b>	<b>50,000</b>	<b>30°</b>	<b>B1</b>	<b>SD</b>	<b>1</b>	<b>Type III</b>	<b>B0 U3 G1</b>	<b>370</b>	0.94
A3080	3000	80	12	50,000	60°	B1	SD	1	Type III	B0 U3 G1	258	0.94
<b>A3080</b>	<b>3000</b>	<b>80</b>	<b>12</b>	<b>50,000</b>	<b>0°</b>	<b>B1</b>	<b>SD</b>	<b>2</b>	<b>Type III</b>	<b>B0 U3 G1</b>	<b>328</b>	0.94
A3080	3000	80	12	50,000	0°	B2	SD	1	Type IV	B0 U3 G1	453	0.94
<b>A3080</b>	<b>3000</b>	<b>80</b>	<b>12</b>	<b>50,000</b>	<b>0°</b>	<b>B2</b>	<b>LD</b>	<b>1</b>	<b>Type III</b>	<b>B0 U2 G1</b>	<b>225</b>	0.94
A3080	3000	80	12	50,000	0°	B1	VR	1	Type II	B0 U2 G1	243	0.94
A3580	3500	80	12	50,000	0°	B1	SD	1	Type IV	B0 U3 G1	402	0.97
<b>A3580</b>	<b>3500</b>	<b>80</b>	<b>12</b>	<b>50,000</b>	<b>30°</b>	<b>B1</b>	<b>SD</b>	<b>1</b>	<b>Type III</b>	<b>B0 U3 G1</b>	<b>382</b>	0.97
A3580	3500	80	12	50,000	60°	B1	SD	1	Type III	B0 U3 G1	266	0.97
<b>A3580</b>	<b>3500</b>	<b>80</b>	<b>12</b>	<b>50,000</b>	<b>0°</b>	<b>B1</b>	<b>SD</b>	<b>2</b>	<b>Type III</b>	<b>B0 U3 G1</b>	<b>338</b>	0.97
A3580	3500	80	12	50,000	0°	B2	SD	1	Type IV	B0 U3 G1	467	0.97
<b>A3580</b>	<b>3500</b>	<b>80</b>	<b>12</b>	<b>50,000</b>	<b>0°</b>	<b>B2</b>	<b>LD</b>	<b>1</b>	<b>Type III</b>	<b>B0 U2 G1</b>	<b>232</b>	0.97
A3580	3500	80	12	50,000	0°	B1	VR	1	Type II	B0 U2 G1	251	0.97
A4080	4000	80	12	50,000	0°	B1	SD	1	Type IV	B0 U3 G1	414	1.00
<b>A4080</b>	<b>4000</b>	<b>80</b>	<b>12</b>	<b>50,000</b>	<b>30°</b>	<b>B1</b>	<b>SD</b>	<b>1</b>	<b>Type III</b>	<b>B0 U3 G1</b>	<b>393</b>	1.00
A4080	4000	80	12	50,000	60°	B1	SD	1	Type III	B0 U3 G1	274	1.00
<b>A4080</b>	<b>4000</b>	<b>80</b>	<b>12</b>	<b>50,000</b>	<b>0°</b>	<b>B1</b>	<b>SD</b>	<b>2</b>	<b>Type III</b>	<b>B0 U3 G1</b>	<b>348</b>	1.00
A4080	4000	80	12	50,000	0°	B2	SD	1	Type IV	B0 U3 G1	481	1.00
<b>A4080</b>	<b>4000</b>	<b>80</b>	<b>12</b>	<b>50,000</b>	<b>0°</b>	<b>B2</b>	<b>LD</b>	<b>1</b>	<b>Type III</b>	<b>B0 U2 G1</b>	<b>239</b>	1.00
A4080	4000	80	12	50,000	0°	B1	VR	1	Type II	B0 U2 G1	258	1.00
A2790	2700	90	12	50,000	0°	B1	SD	1	Type IV	B0 U3 G1	318	0.77
<b>A2790</b>	<b>2700</b>	<b>90</b>	<b>12</b>	<b>50,000</b>	<b>30°</b>	<b>B1</b>	<b>SD</b>	<b>1</b>	<b>Type III</b>	<b>B0 U3 G1</b>	<b>302</b>	0.77
A2790	2700	90	12	50,000	60°	B1	SD	1	Type III	B0 U3 G1	211	0.77
<b>A2790</b>	<b>2700</b>	<b>90</b>	<b>12</b>	<b>50,000</b>	<b>0°</b>	<b>B1</b>	<b>SD</b>	<b>2</b>	<b>Type III</b>	<b>B0 U3 G1</b>	<b>267</b>	0.77
A2790	2700	90	12	50,000	0°	B2	SD	1	Type IV	B0 U3 G1	370	0.77
<b>A2790</b>	<b>2700</b>	<b>90</b>	<b>12</b>	<b>50,000</b>	<b>0°</b>	<b>B2</b>	<b>LD</b>	<b>1</b>	<b>Type III</b>	<b>B0 U2 G1</b>	<b>184</b>	0.77
A2790	2700	90	12	50,000	0°	B1	VR	1	Type II	B0 U2 G1	198	0.77
A3090	3000	90	12	50,000	0°	B1	SD	1	Type IV	B0 U3 G1	326	0.79
<b>A3090</b>	<b>3000</b>	<b>90</b>	<b>12</b>	<b>50,000</b>	<b>30°</b>	<b>B1</b>	<b>SD</b>	<b>1</b>	<b>Type III</b>	<b>B0 U3 G1</b>	<b>309</b>	0.79
A3090	3000	90	12	50,000	60°	B1	SD	1	Type III	B0 U3 G1	216	0.79
<b>A3090</b>	<b>3000</b>	<b>90</b>	<b>12</b>	<b>50,000</b>	<b>0°</b>	<b>B1</b>	<b>SD</b>	<b>2</b>	<b>Type III</b>	<b>B0 U3 G1</b>	<b>274</b>	0.79
A3090	3000	90	12	50,000	0°	B2	SD	1	Type IV	B0 U3 G1	378	0.79
<b>A3090</b>	<b>3000</b>	<b>90</b>	<b>12</b>	<b>50,000</b>	<b>0°</b>	<b>B2</b>	<b>LD</b>	<b>1</b>	<b>Type III</b>	<b>B0 U2 G1</b>	<b>188</b>	0.79
A3090	3000	90	12	50,000	0°	B1	VR	1	Type II	B0 U2 G1	203	0.79

**B-K LIGHTING**

**MADE IN THE USA**

559.438.5800 | INFO@BKLIGHTING.COM | BKLIGHTING.COM

THIS DOCUMENT CONTAINS PROPRIETARY INFORMATION OF B-K LIGHTING, INC. AND ITS RECEIPT OR POSSESSION DOES NOT CONVEY ANY RIGHTS TO REPRODUCE, DISCLOSE ITS CONTENTS, OR TO MANUFACTURE, USE OR SELL ANYTHING IT MAY DESCRIBE. REPRODUCTION, DISCLOSURE OR USE WITHOUT SPECIFIC WRITTEN AUTHORIZATION OF B-K LIGHTING, INC. IS STRICTLY FORBIDDEN.

# LAMP & DRIVER DATA (YUKON INDIRECT - page 2 of 2)

DATE: \_\_\_\_\_ PROJECT: \_\_\_\_\_ TYPE: \_\_\_\_\_

## LM79 DATA

## OPTICAL DATA

BK No.	CCT (Typ.)	CRI (Typ.)	Fixture Watts	L70 Data	LED Orientation	Backplate	Faceplate	Accessory/ Optic	Roadway Class	Bug	Del. Lumens	Multiplier
A3590	3500	90	12	50,000	0°	B1	SD	1	Type IV	B0 U3 G1	336	0.81
<b>A3590</b>	<b>3500</b>	<b>90</b>	<b>12</b>	<b>50,000</b>	<b>30°</b>	<b>B1</b>	<b>SD</b>	<b>1</b>	<b>Type III</b>	<b>B0 U3 G1</b>	<b>319</b>	<b>0.81</b>
A3590	3500	90	12	50,000	60°	B1	SD	1	Type III	B0 U3 G1	222	0.81
<b>A3590</b>	<b>3500</b>	<b>90</b>	<b>12</b>	<b>50,000</b>	<b>0°</b>	<b>B1</b>	<b>SD</b>	<b>2</b>	<b>Type III</b>	<b>B0 U3 G1</b>	<b>282</b>	<b>0.81</b>
A3590	3500	90	12	50,000	0°	B2	SD	1	Type IV	B0 U3 G1	390	0.81
<b>A3590</b>	<b>3500</b>	<b>90</b>	<b>12</b>	<b>50,000</b>	<b>0°</b>	<b>B2</b>	<b>LD</b>	<b>1</b>	<b>Type III</b>	<b>B0 U2 G1</b>	<b>194</b>	<b>0.81</b>
A3590	3500	90	12	50,000	0°	B1	VR	1	Type II	B0 U2 G1	209	0.81
A4090	4000	90	12	50,000	0°	B1	SD	1	Type IV	B0 U3 G1	346	0.83
<b>A4090</b>	<b>4000</b>	<b>90</b>	<b>12</b>	<b>50,000</b>	<b>30°</b>	<b>B1</b>	<b>SD</b>	<b>1</b>	<b>Type III</b>	<b>B0 U3 G1</b>	<b>328</b>	<b>0.83</b>
A4090	4000	90	12	50,000	60°	B1	SD	1	Type III	B0 U3 G1	229	0.83
<b>A4090</b>	<b>4000</b>	<b>90</b>	<b>12</b>	<b>50,000</b>	<b>0°</b>	<b>B1</b>	<b>SD</b>	<b>2</b>	<b>Type III</b>	<b>B0 U3 G1</b>	<b>291</b>	<b>0.83</b>
A4090	4000	90	12	50,000	0°	B2	SD	1	Type IV	B0 U3 G1	402	0.83
<b>A4090</b>	<b>4000</b>	<b>90</b>	<b>12</b>	<b>50,000</b>	<b>0°</b>	<b>B2</b>	<b>LD</b>	<b>1</b>	<b>Type III</b>	<b>B0 U2 G1</b>	<b>200</b>	<b>0.83</b>
A4090	4000	90	12	50,000	0°	B1	VR	1	Type II	B0 U2 G1	215	0.83

**B-K LIGHTING**

**MADE IN THE USA**

559.438.5800 | INFO@BKLIGHTING.COM | BKLIGHTING.COM

THIS DOCUMENT CONTAINS PROPRIETARY INFORMATION OF B-K LIGHTING, INC. AND ITS RECEIPT OR POSSESSION DOES NOT CONVEY ANY RIGHTS TO REPRODUCE, DISCLOSE ITS CONTENTS, OR TO MANUFACTURE, USE OR SELL ANYTHING IT MAY DESCRIBE. REPRODUCTION, DISCLOSURE OR USE WITHOUT SPECIFIC WRITTEN AUTHORIZATION OF B-K LIGHTING, INC. IS STRICTLY FORBIDDEN.